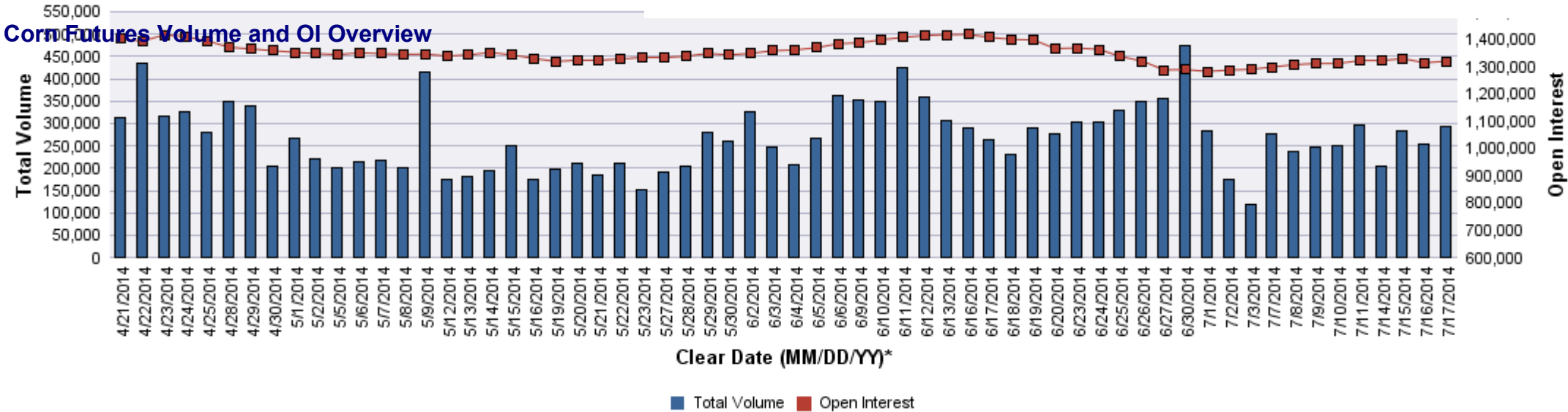
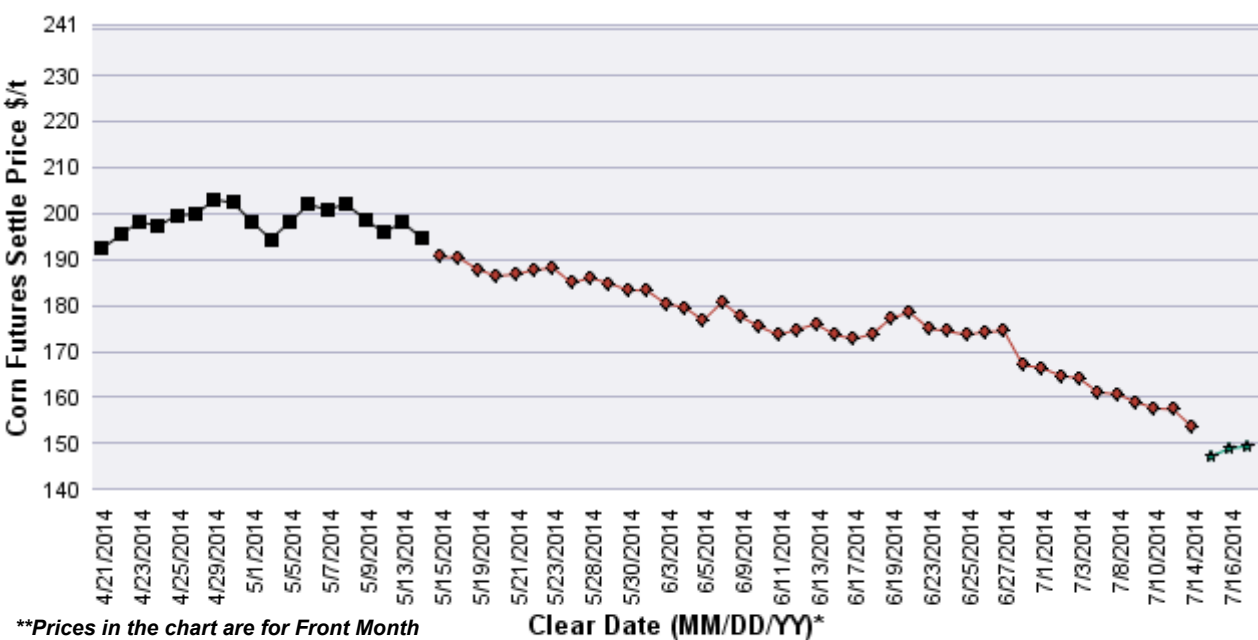
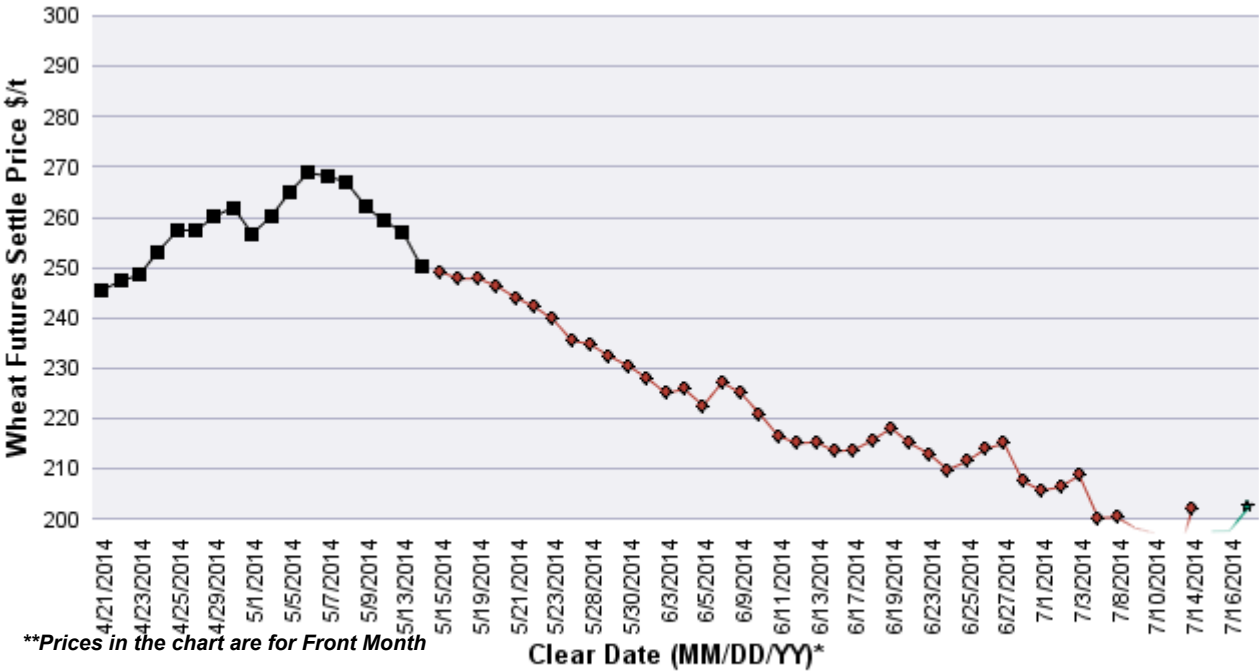


Contract Month	Volume (Contracts)	Open Interest	OI Net Diff	Settle Price \$/t	Settle Price Diff \$/t
201409	99,242	502,447	592	149.40	0.49
201412	150,479	565,677	2,359	152.45	0.20
201503	21,757	100,607	555	157.08	0.20
201505	6,299	24,243	46	160.43	0.30
201507	8,297	46,211	855	163.48	0.30
201509	1,217	10,773	476	165.84	0.49
201512	5,492	63,371	731	167.71	0.59
201603	179	1,662	163	171.35	0.69
201605	72	526	40	174.01	0.89
201607	53	1,159	18	175.19	0.89
201609	0	145	0	173.71	1.08
201612	99	2,208	4	172.53	0.79
201707	0	29	0	180.01	0.98
201712	11	168	1	177.26	1.28

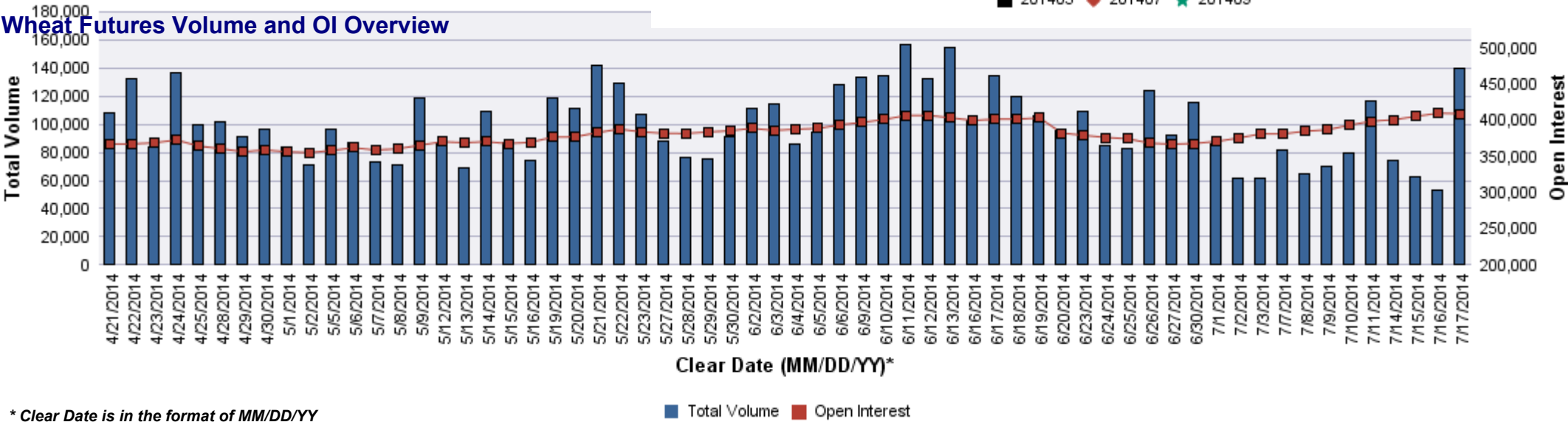


* Clear Date is in the format of MM/DD/YY

Contract Month	Volume (Contracts)	Open Interest	OI Net Diff	Settle Price \$/t	Settle Price Diff \$/t
201409	88,501	202,391	-2,534	202.37	4.68
201412	38,261	117,266	671	210.73	4.23
201503	8,555	43,105	228	218.53	4.13
201505	2,543	11,050	286	223.77	4.04
201507	1,899	28,184	636	227.90	4.04
201509	90	1,394	27	232.31	3.86
201512	248	4,310	97	237.55	3.49
201603	9	1,253	1	240.85	3.49
201605	4	55	0	240.49	3.31
201607	14	142	6	235.89	2.94



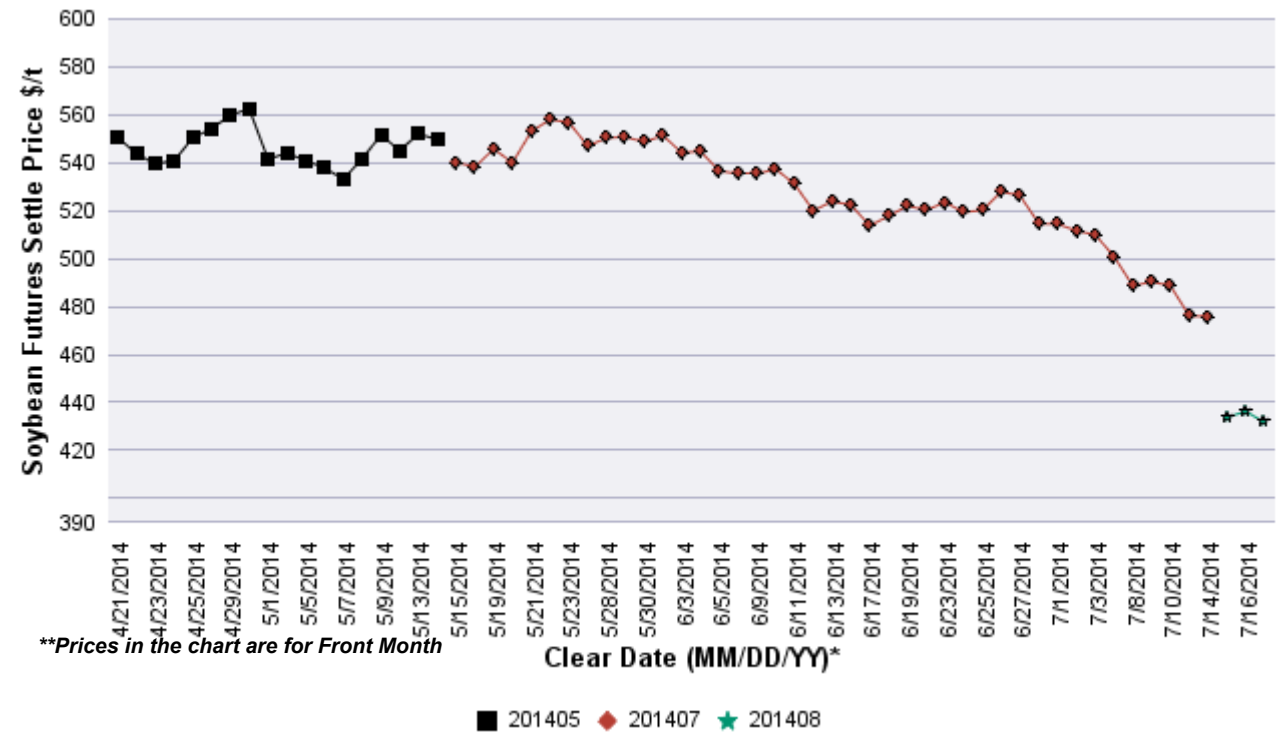
Wheat Futures Volume and OI Overview



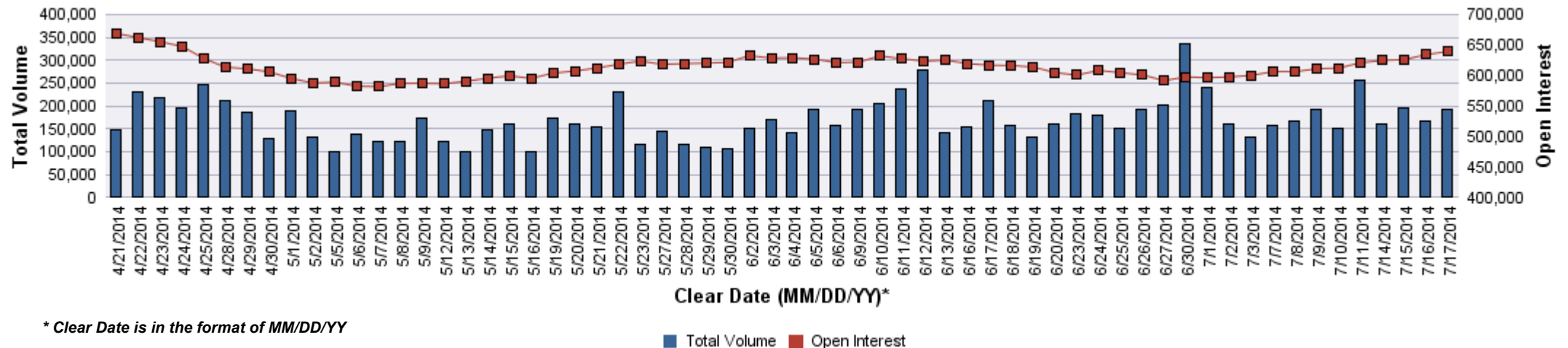
* Clear Date is in the format of MM/DD/YY

SOYBEAN FUTURES VOI as of 7/17/14

Contract Month	Volume (Contracts)	Open Interest	OI Net Diff	Settle Price \$/t	Settle Price Diff \$/t
201408	23,518	53,844	-2,609	431.65	-4.59
201409	11,783	28,315	170	408.04	-4.04
201411	123,062	403,001	3,616	401.98	-2.94
201501	17,008	54,630	2,094	404.82	-3.22
201503	9,796	34,889	681	407.67	-3.58
201505	3,363	18,161	461	410.43	-3.40
201507	2,528	20,254	489	413.18	-3.49
201508	103	854	27	412.08	-2.39
201509	25	195	4	406.66	-2.48
201511	1,801	24,681	472	404.36	-2.48
201601	3	187	0	406.20	-2.66
201603	2	18	0	407.49	-2.76
201605	0	2	0	408.77	-2.76
201607	2	58	0	409.78	-3.03
201608	0	5	0	409.23	-3.03
201609	0	2	0	403.72	-3.58
201611	31	425	23	398.76	-5.05
201707	0	5	0	403.45	-5.05
201711	0	44	0	399.86	-4.41



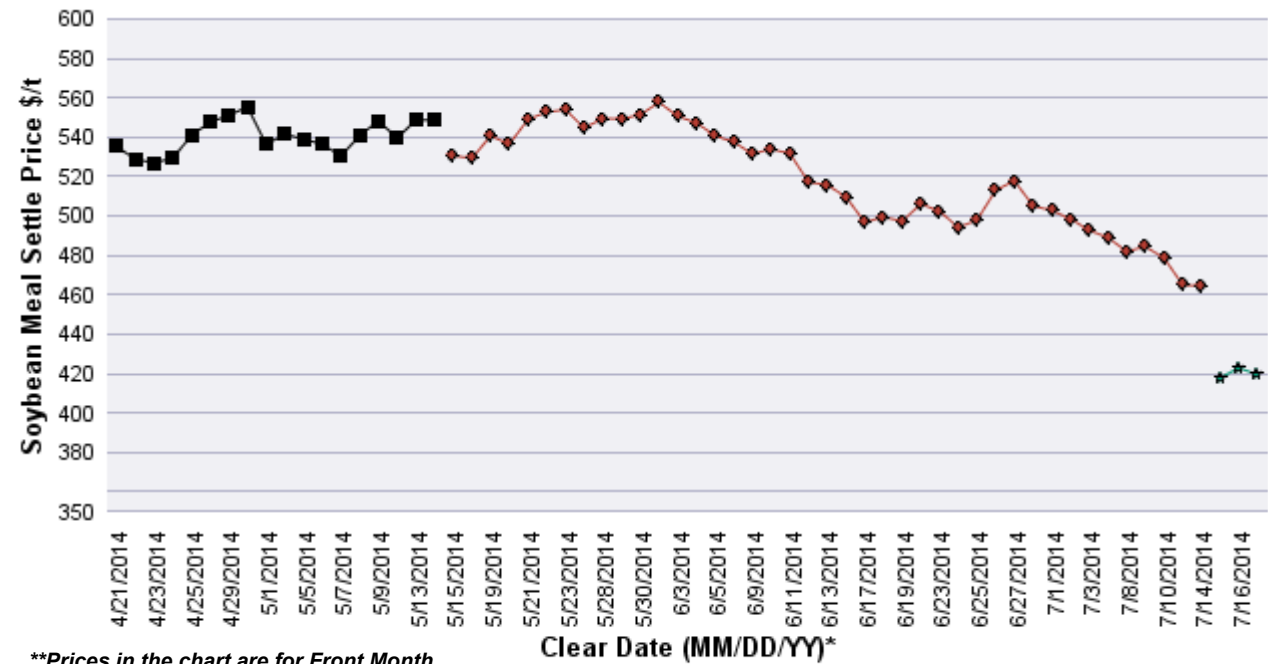
Soybean Futures Volume and OI Overview



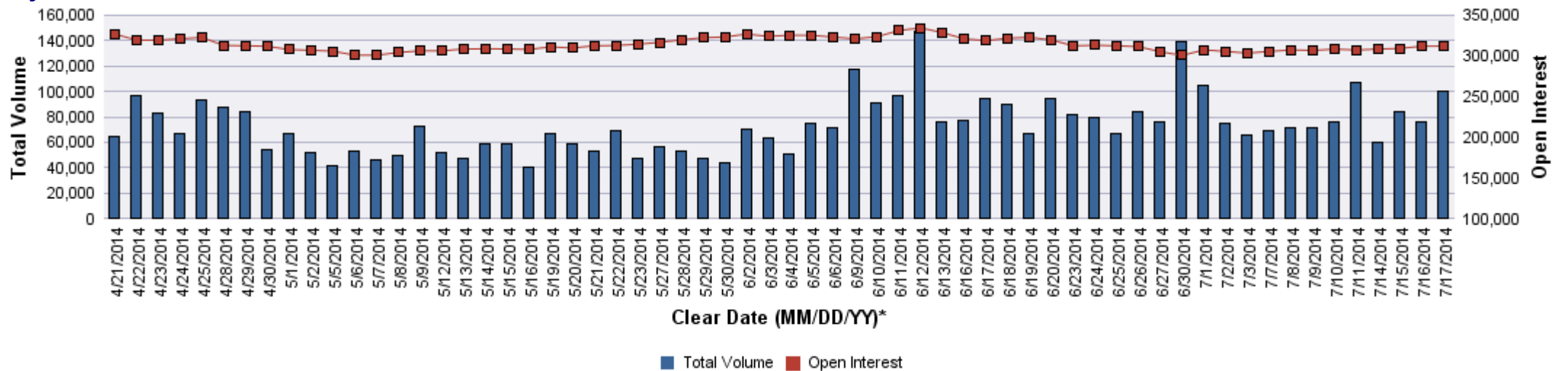
* Clear Date is in the format of MM/DD/YY

SOYBEAN MEAL FUTURES VOI as of 7/17/14

Contract Month	Volume (Contracts)	Open Interest	OI Net Diff	Settle Price \$/t	Settle Price Diff \$/t
201408	19,332	40,432	-1,984	419.43	-3.53
201409	9,211	31,915	1,904	402.56	-1.32
201410	6,270	22,165	395	395.62	0.99
201412	51,898	155,700	-799	394.08	0.77
201501	3,982	16,492	287	391.87	-0.44
201503	5,661	15,662	-20	393.30	-1.21
201505	1,872	10,602	183	395.51	-1.43
201507	1,411	11,153	173	398.04	-1.32
201508	183	2,360	-7	397.93	-0.22
201509	62	1,222	24	394.74	-1.21
201510	46	895	0	388.79	-2.20
201512	75	3,527	18	389.56	-1.65
201601	3	39	1	388.90	-2.54
201603	0	22	0	389.67	-2.43



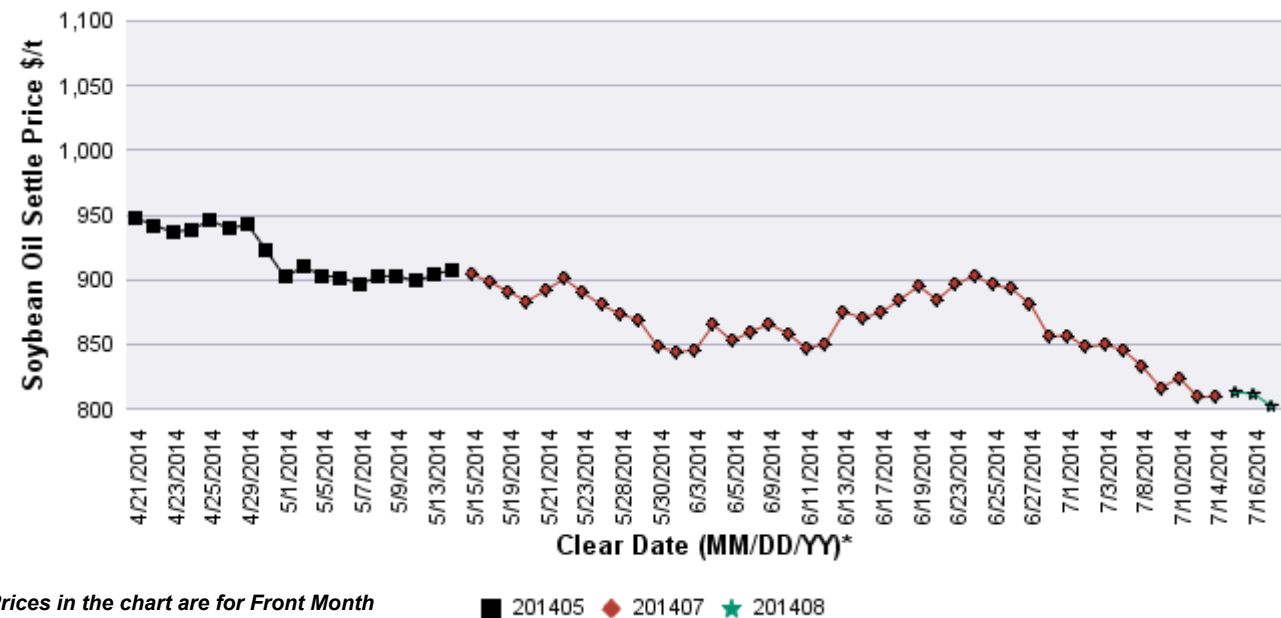
Soybean Meal Volume and OI Overview



* Clear Date is in the format of MM/DD/YY

SOYBEAN OIL FUTURES VOI as of 7/17/14

Contract Month	Volume (Contracts)	Open Interest	OI Net Diff	Settle Price \$/t	Settle Price Diff \$/t
201408	25,180	42,243	-3,428	801.82	-10.14
201409	16,159	29,606	958	803.81	-10.36
201410	5,652	19,141	698	802.26	-11.68
201412	52,842	192,900	4,832	802.26	-13.23
201501	3,291	17,871	-190	805.57	-12.57
201503	3,307	12,579	161	808.66	-12.57
201505	961	9,289	161	812.18	-12.13
201507	1,738	5,291	-300	814.83	-12.13
201508	214	1,418	-17	815.05	-12.13
201509	78	1,208	38	812.84	-11.02
201510	37	921	6	811.08	-12.13
201512	103	2,520	0	813.29	-10.14
201601	19	95	13	816.15	-10.14
201603	6	154	6	820.34	-9.92
201605	0	119	0	825.19	-9.26
201607	0	133	0	828.06	-9.26
201608	0	59	0	827.39	-9.04
201609	0	73	0	827.39	-9.48
201612	0	14	0	826.07	-9.48



Soybean Oil Volume and OI Overview

