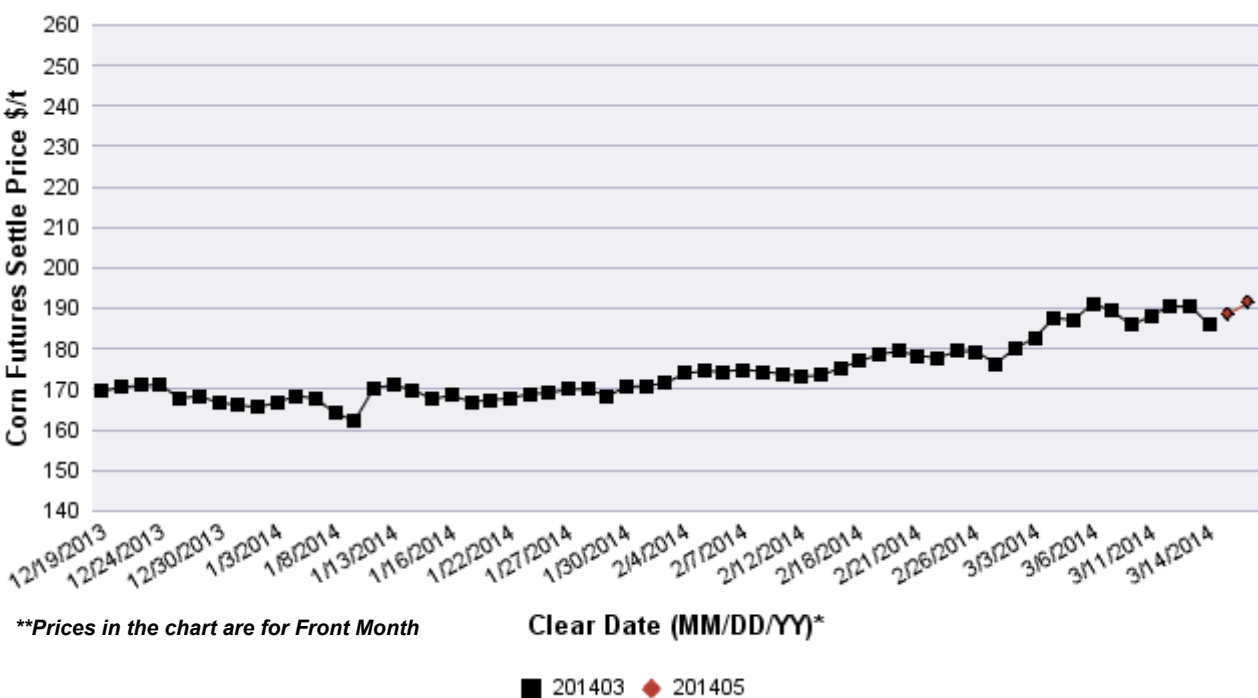
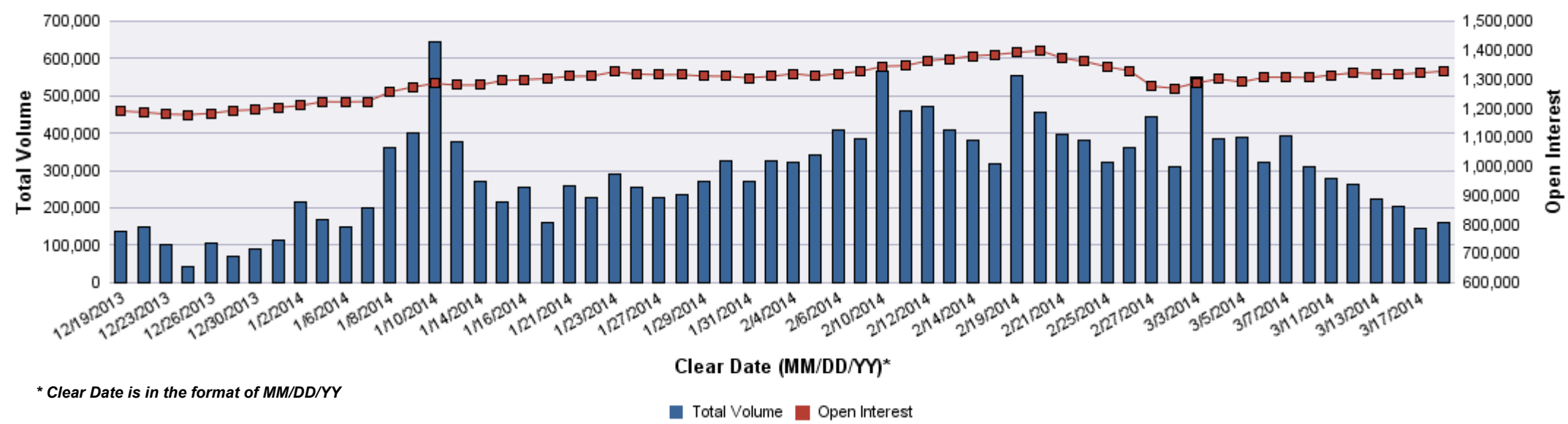


Contract Month	Volume (Contracts)	Open Interest	OI Net Diff	Settle Price \$/t	Settle Price Diff \$/t
201403	0	0	0	185.94	0.00
201405	90,577	558,080	-120	191.43	2.85
201407	36,461	247,046	2,403	193.30	2.76
201409	11,289	112,853	1,448	192.41	2.46
201412	19,449	317,998	924	192.02	2.26
201503	1,668	40,767	366	195.17	2.17
201505	390	6,686	50	197.43	2.07
201507	364	7,547	204	198.22	1.97
201509	2	1,150	0	192.61	1.77
201512	491	33,201	270	191.33	1.97
201603	0	350	0	193.79	1.97
201605	0	28	0	195.07	1.97
201607	0	831	0	196.15	1.97
201609	0	13	0	189.07	1.97
201612	1	1,415	1	185.33	1.38
201707	0	2	0	191.62	1.48
201712	0	33	0	179.32	1.38

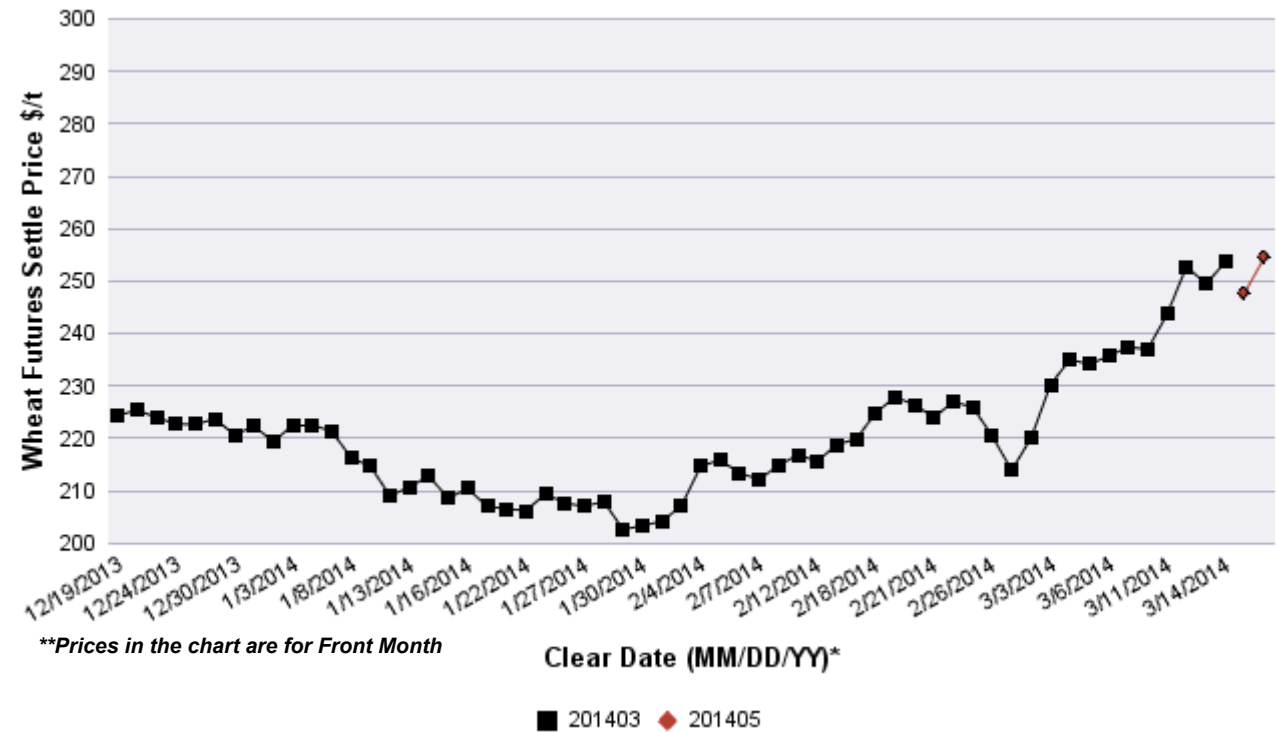


Corn Futures Volume and OI Overview

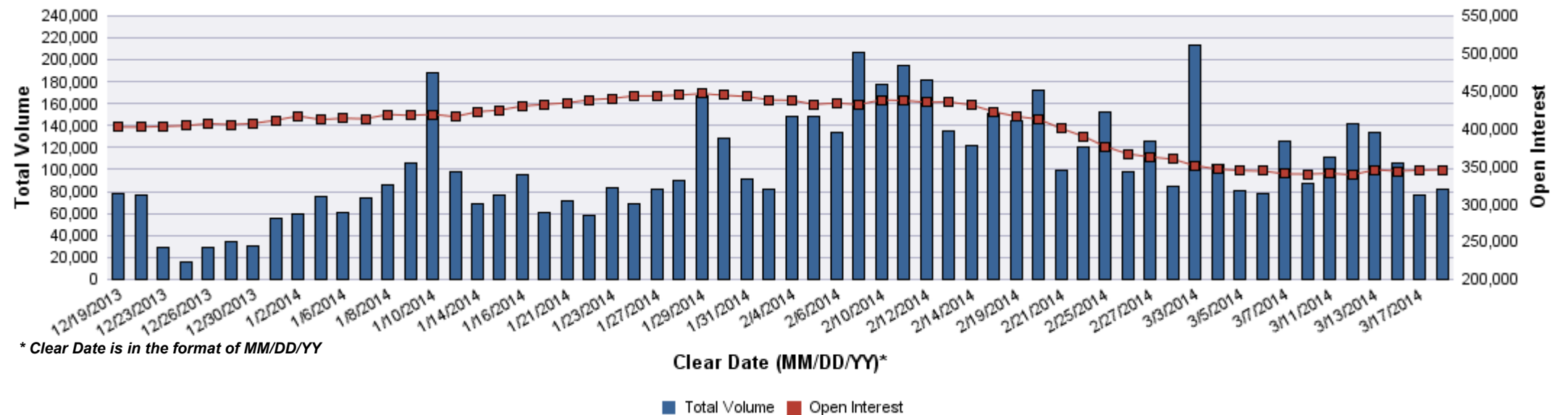


WHEAT FUTURES VOI as of 3/18/14

Contract Month	Volume (Contracts)	Open Interest	OI Net Diff	Settle Price \$/t	Settle Price Diff \$/t
201403	0	0	0	253.65	0.00
201405	50,345	169,984	-415	254.45	6.61
201407	18,159	97,311	262	255.55	6.34
201409	4,744	25,486	-476	258.22	6.06
201412	7,604	39,349	866	261.62	5.88
201503	743	9,461	360	263.54	5.79
201505	28	477	23	263.64	5.51
201507	268	2,647	54	260.51	6.71
201509	7	61	6	261.71	6.61
201512	12	758	5	264.74	6.52
201603	0	80	0	265.93	6.61
201605	2	6	1	265.93	6.98
201607	2	62	1	251.14	2.85



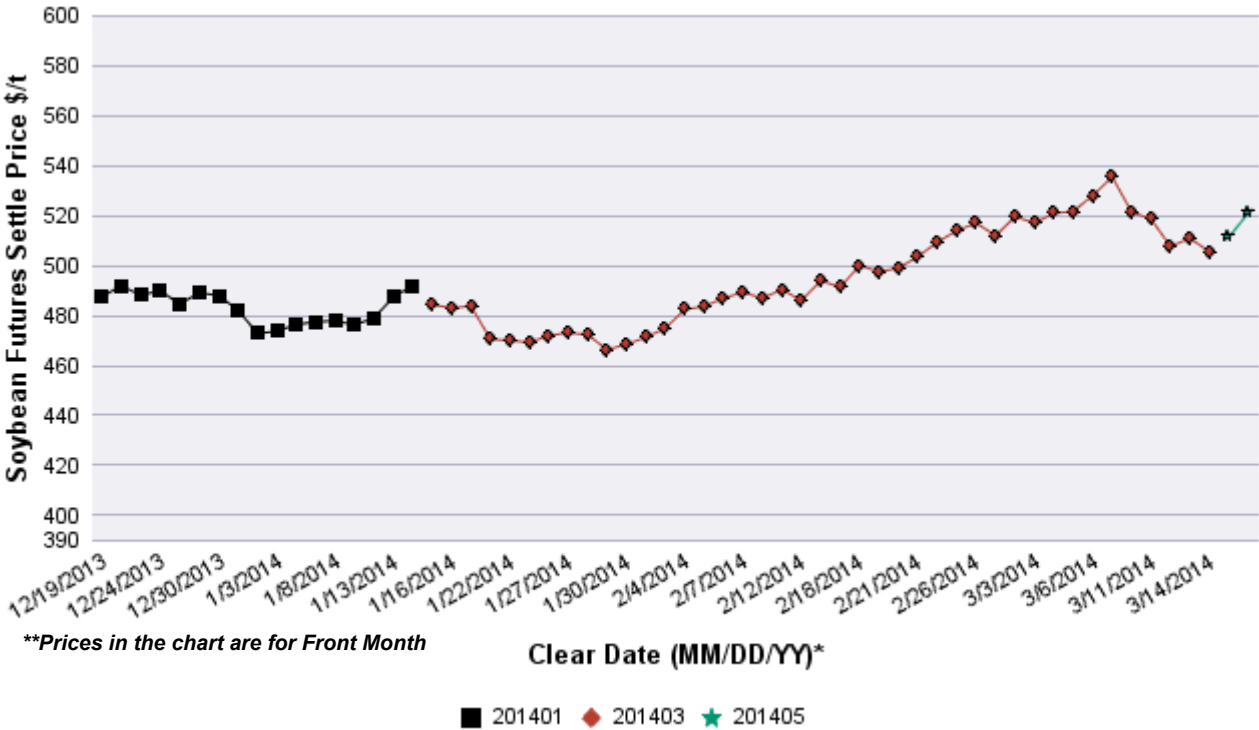
Wheat Futures Volume and OI Overview



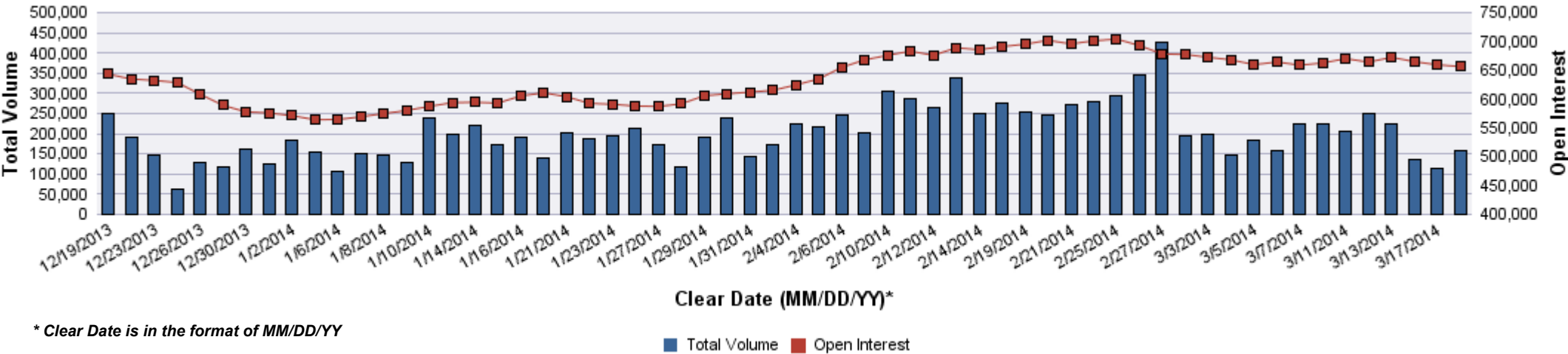
SOYBEAN FUTURES VOI as of 3/18/14



Contract Month	Volume (Contracts)	Open Interest	OI Net Diff	Settle Price \$/t	Settle Price Diff \$/t
201403	0	0	0	505.59	0.00
201405	86,122	299,998	-4,751	521.12	9.74
201407	43,598	136,389	1,032	512.85	7.53
201408	3,236	13,962	-409	495.40	4.32
201409	901	7,934	0	458.01	4.41
201411	20,448	159,570	515	435.23	3.22
201501	1,245	16,333	356	436.88	3.40
201503	348	6,366	-2	437.98	3.31
201505	324	3,762	106	439.09	3.40
201507	116	4,254	43	440.28	3.49
201508	0	8	0	432.47	3.49
201509	0	6	0	420.07	2.57
201511	155	7,669	44	416.77	2.57
201601	0	25	0	416.31	2.57
201603	0	5	0	415.39	2.57
201607	0	16	0	416.21	2.57
201609	0	2	0	405.47	2.57
201611	1	86	0	399.77	2.48
201711	0	1	0	396.01	2.48



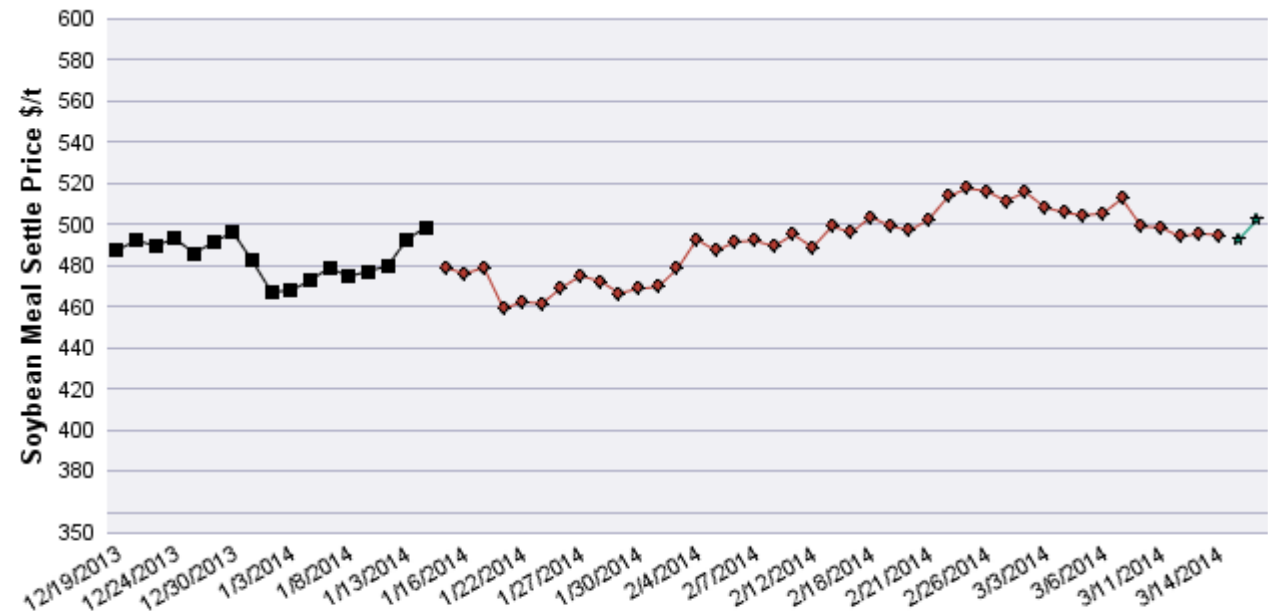
Soybean Futures Volume and OI Overview



* Clear Date is in the format of MM/DD/YY

SOYBEAN MEAL FUTURES VOI as of 3/18/14

Contract Month	Volume (Contracts)	Open Interest	OI Net Diff	Settle Price \$/t	Settle Price Diff \$/t
201403	0	0	0	494.94	0.00
201405	38,508	157,490	-1,133	502.43	10.14
201407	13,718	63,276	483	487.11	8.05
201408	1,940	13,127	238	464.40	4.30
201409	960	6,236	207	438.50	2.65
201410	724	9,994	-22	407.74	1.87
201412	7,155	46,737	21	403.56	2.20
201501	343	4,654	-12	403.34	2.09
201503	352	5,913	-51	404.55	1.43
201505	488	3,003	-72	405.43	1.65
201507	87	1,679	3	406.64	1.43
201508	0	140	0	404.44	1.21
201509	0	94	0	401.35	1.21
201510	0	68	0	389.34	0.11
201512	22	897	2	388.01	0.00
201601	0	15	0	388.45	-0.11

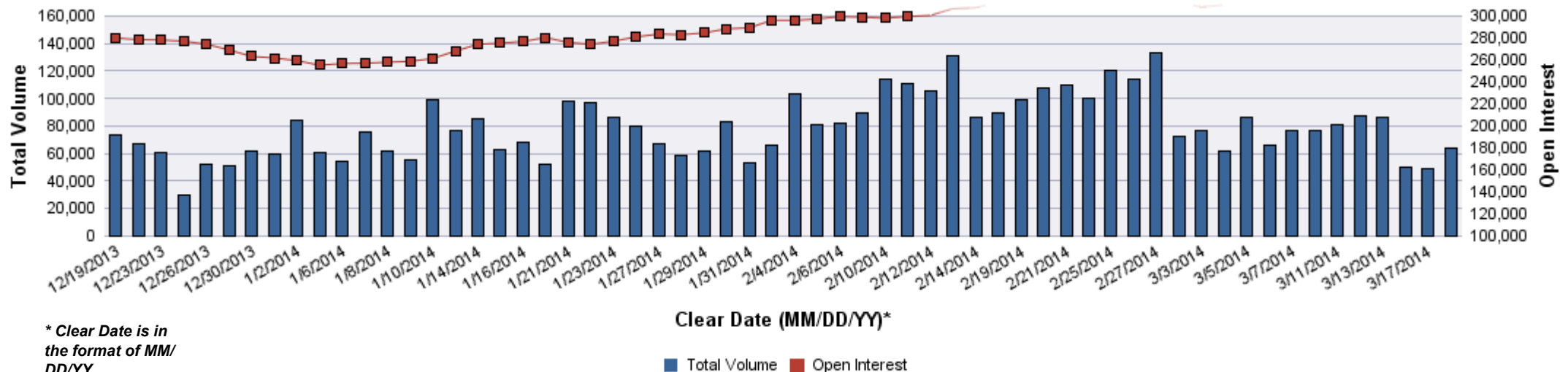


**Prices in the chart are for Front Month

Clear Date (MM/DD/YY)*

■ 201401 ◆ 201403 ★ 201405

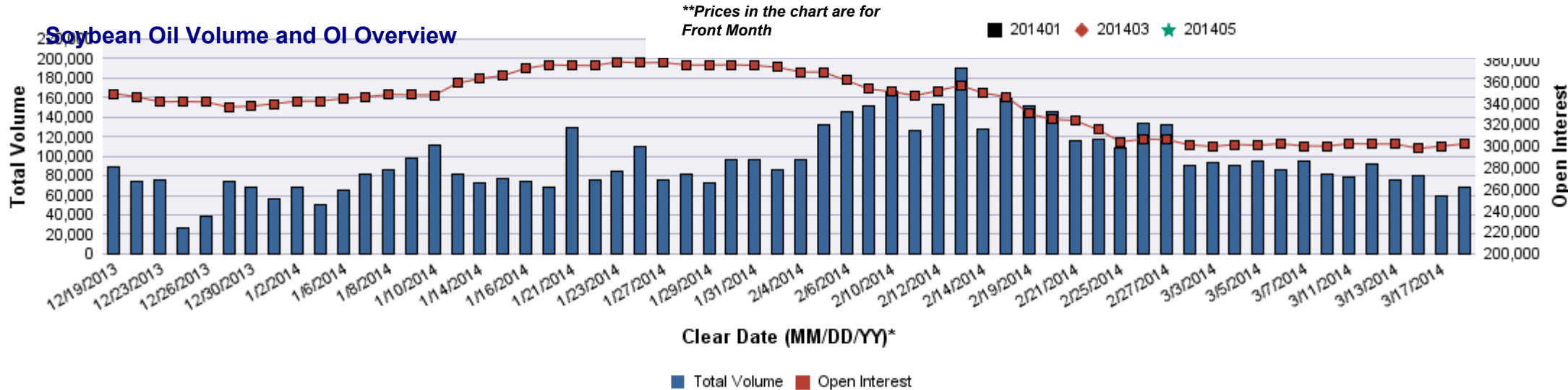
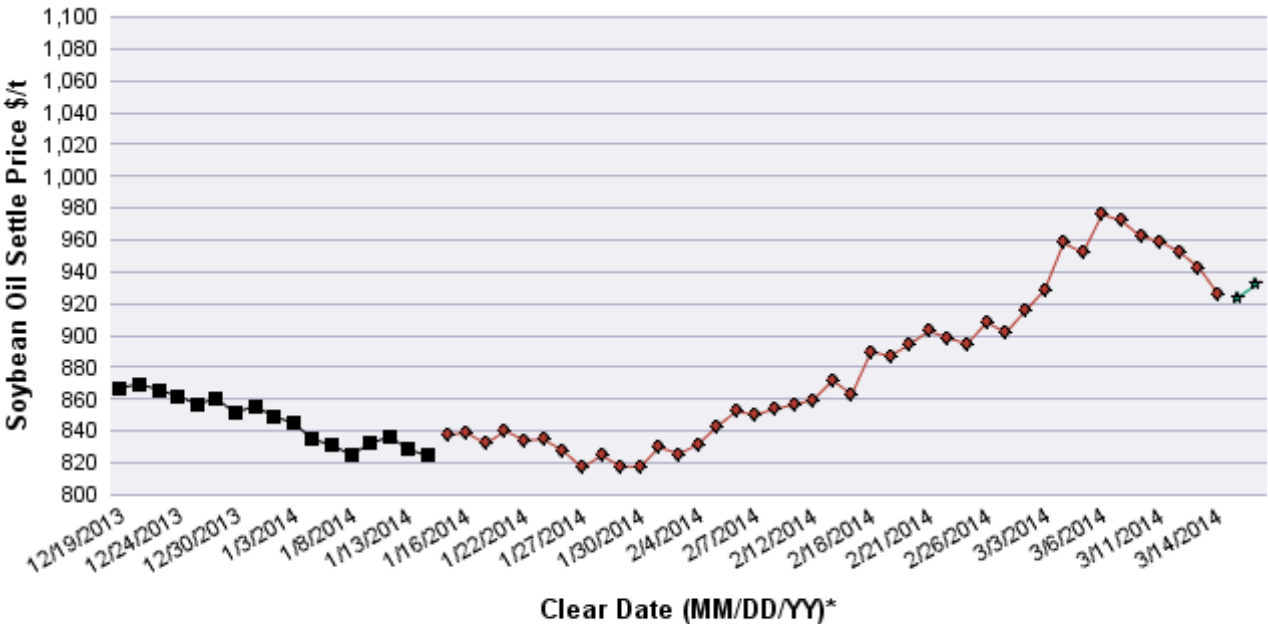
Soybean Meal Volume and OI Overview



* Clear Date is in the format of MM/DD/YY

■ Total Volume ■ Open Interest

Contract Month	Volume (Contracts)	Open Interest	OI Net Diff	Settle Price \$/t	Settle Price Diff \$/t
201403	0	0	0	926.38	0.00
201405	41,809	145,398	900	931.89	8.38
201407	15,668	70,957	310	935.64	9.04
201408	1,694	9,703	369	931.89	7.94
201409	908	8,578	146	924.18	7.94
201410	862	8,968	-11	912.71	8.16
201412	6,339	47,178	197	912.49	7.72
201501	126	4,505	-6	911.83	7.72
201503	145	3,435	24	912.93	8.38
201505	234	1,717	79	913.37	11.02
201507	81	790	0	913.15	11.68
201508	28	313	23	911.17	12.57
201509	23	279	22	906.76	11.90
201510	71	129	42	885.60	11.68
201512	103	443	69	884.49	11.02



* Clear Date is in the format of MM/DD/YY