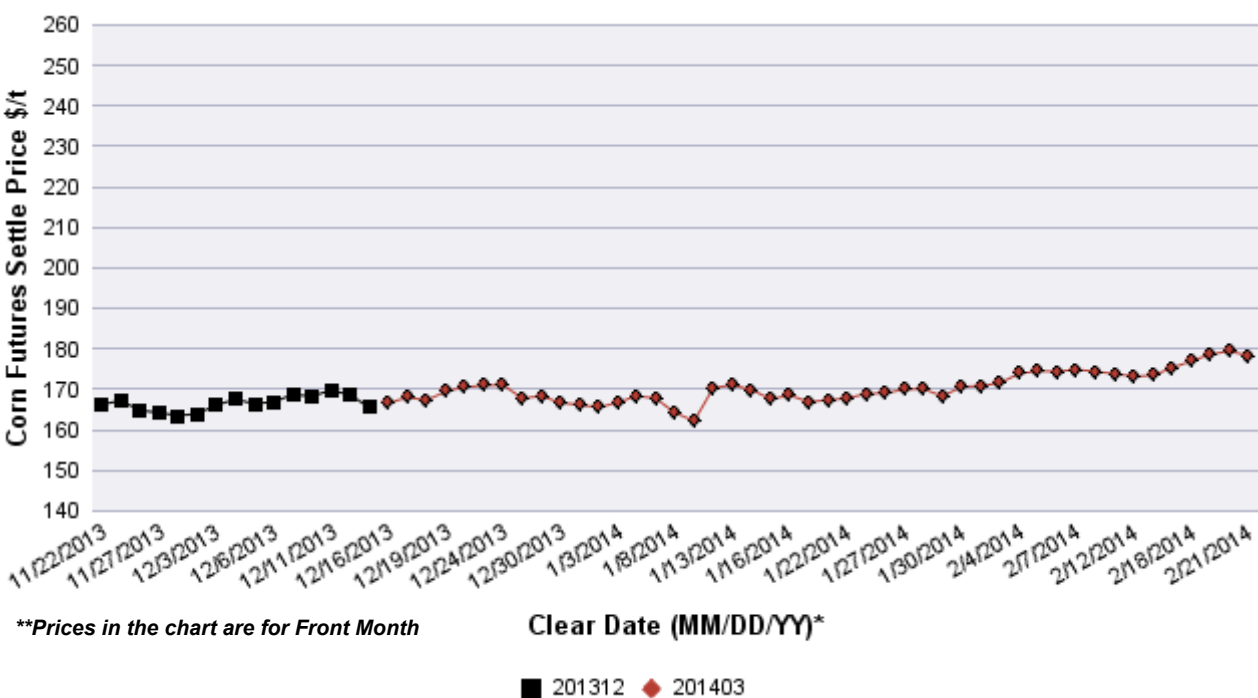
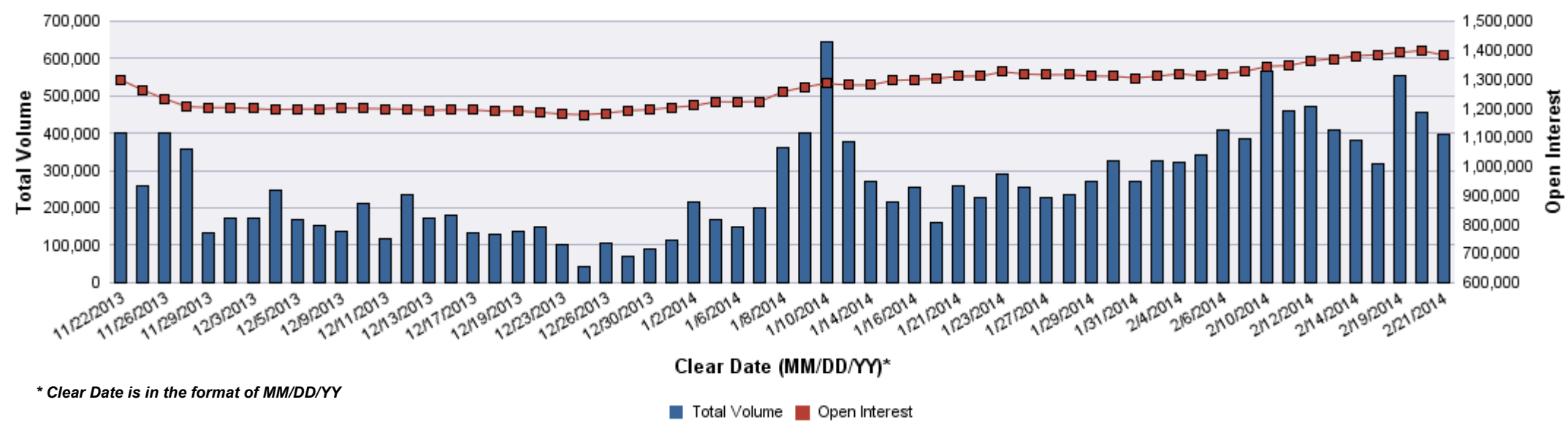


Contract Month	Volume (Contracts)	Open Interest	OI Net Diff	Settle Price \$/t	Settle Price Diff \$/t
201403	145,576	210,250	-34,126	178.34	-1.08
201405	152,939	500,054	9,344	180.70	-1.28
201407	49,660	261,196	4,795	182.18	-1.57
201409	13,704	86,225	3,032	181.68	-1.97
201412	33,637	264,943	155	182.77	-1.77
201503	1,364	20,941	429	186.31	-1.67
201505	436	4,627	259	188.87	-1.57
201507	236	4,981	87	189.95	-1.48
201509	22	1,100	10	184.83	-2.07
201512	1,104	26,670	183	185.13	-1.67
201603	10	216	6	187.88	-1.57
201605	0	13	0	188.67	-1.48
201607	1	682	1	189.56	-1.77
201609	0	12	0	183.75	-1.38
201612	14	1,299	-2	181.49	-1.38
201707	0	2	0	184.83	-1.48
201712	1	24	0	178.04	-1.48

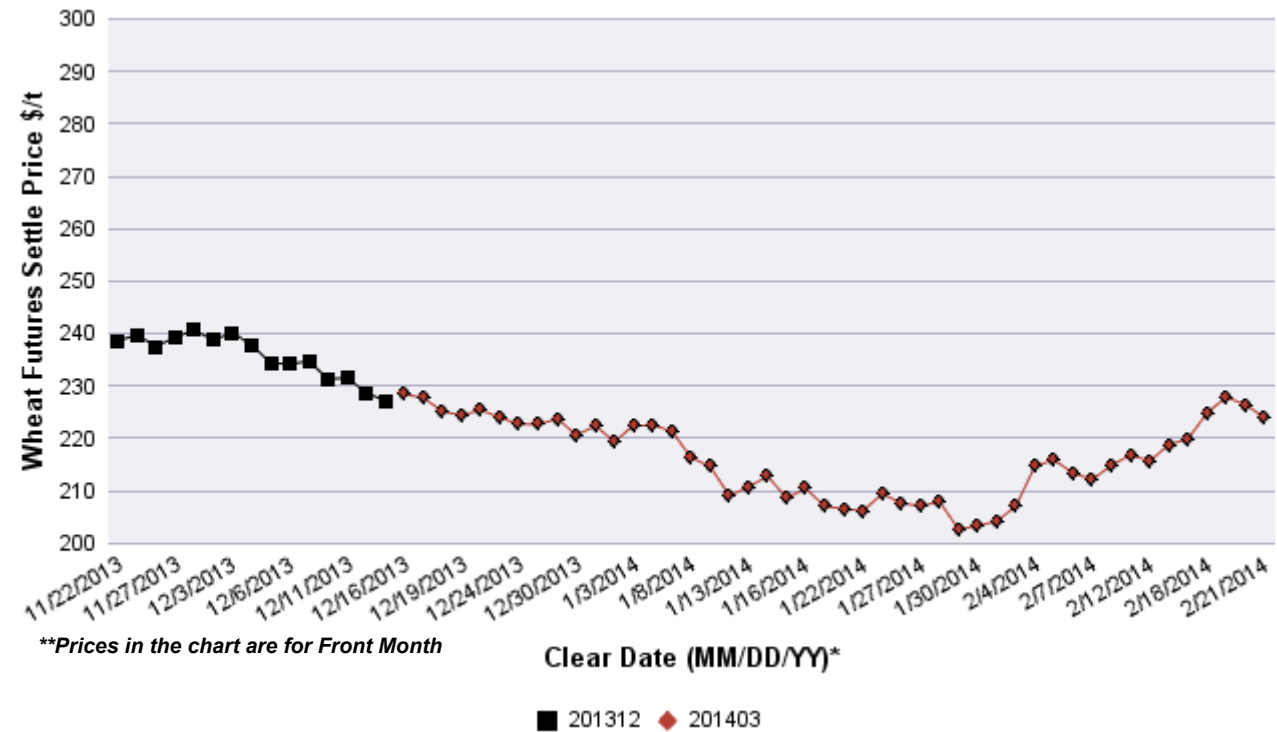


Corn Futures Volume and OI Overview

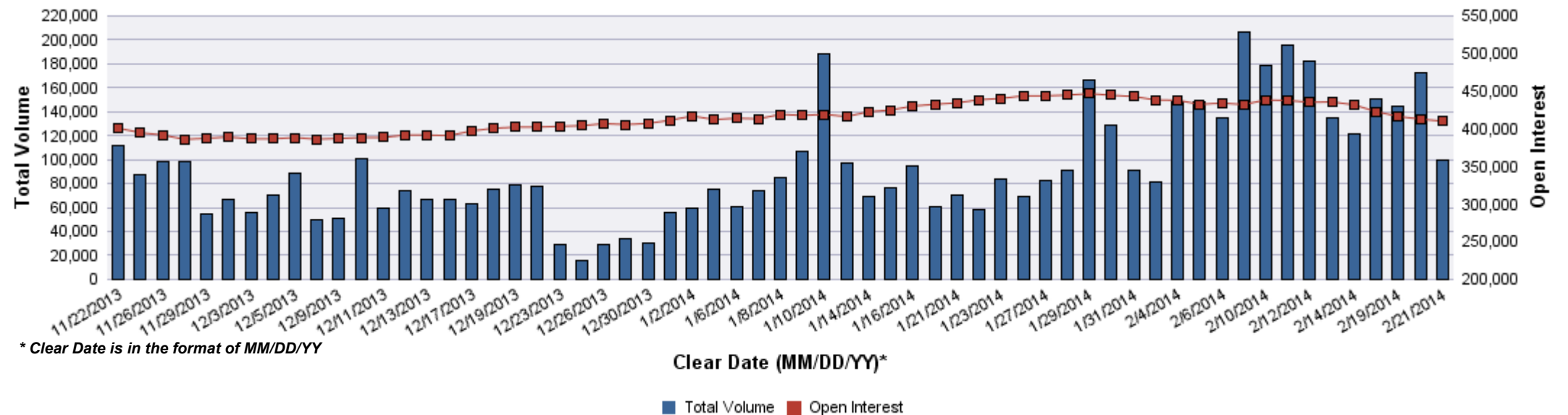


WHEAT FUTURES VOI as of 2/21/14

Contract Month	Volume (Contracts)	Open Interest	OI Net Diff	Settle Price \$/t	Settle Price Diff \$/t
201403	33,245	50,496	-6,460	224.04	-2.39
201405	42,002	201,462	3,408	222.48	-2.94
201407	17,234	103,748	-1,228	223.86	-2.94
201409	3,445	15,245	1,059	226.98	-3.03
201412	3,784	32,467	515	231.67	-2.85
201503	138	5,035	56	234.88	-2.94
201505	4	219	1	235.25	-2.76
201507	11	1,199	-1	232.13	-2.85
201509	0	22	0	234.06	-2.85
201512	1	311	0	237.36	-2.66
201603	0	7	0	239.57	-2.66
201605	0	0	0	238.93	-2.66
201607	0	28	0	230.93	-2.66



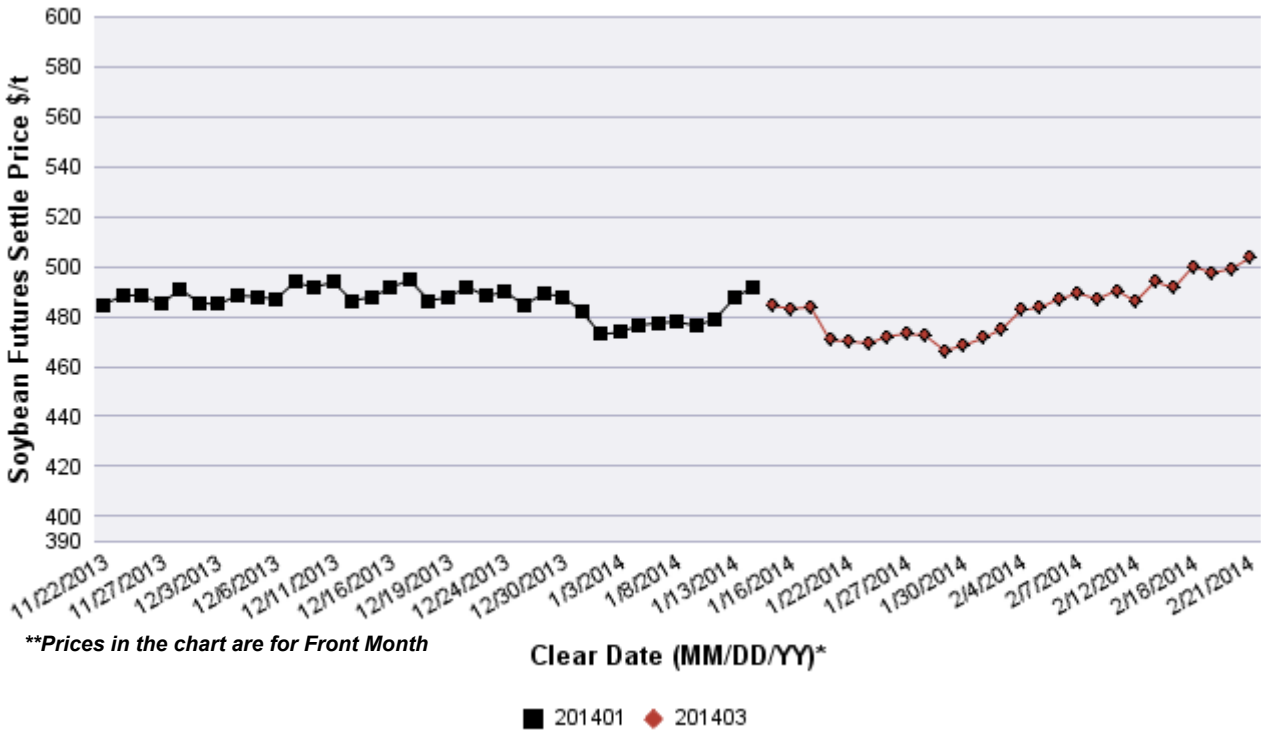
Wheat Futures Volume and OI Overview



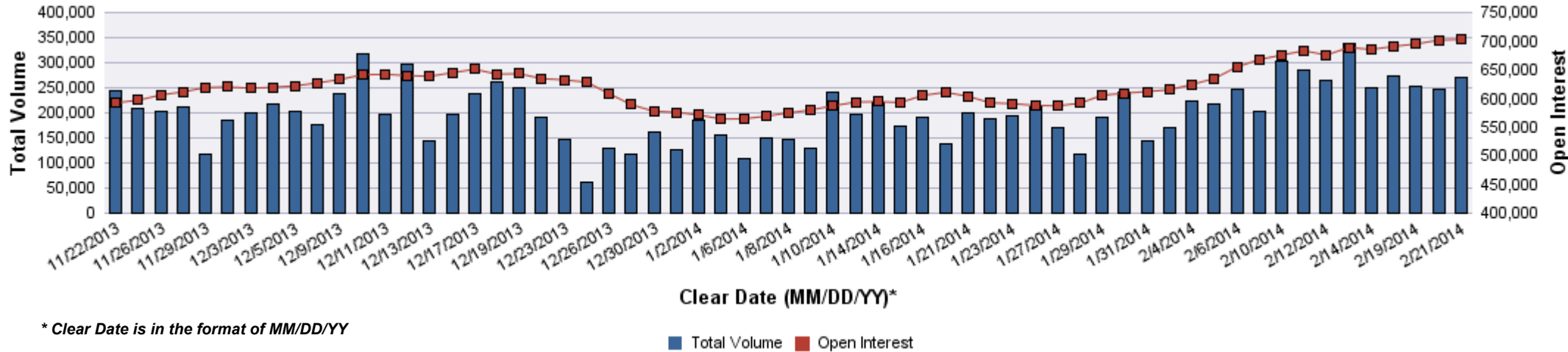
SOYBEAN FUTURES VOI as of 2/21/14



Contract Month	Volume (Contracts)	Open Interest	OI Net Diff	Settle Price \$/t	Settle Price Diff \$/t
201403	87,981	89,695	-18,656	503.66	4.59
201405	115,598	307,451	13,609	499.81	4.59
201407	34,287	125,217	796	494.11	4.78
201408	3,941	8,314	1,726	477.39	6.61
201409	1,254	5,361	365	446.34	5.51
201411	25,531	136,565	3,037	423.93	3.12
201501	746	12,580	266	425.49	3.03
201503	521	5,122	68	426.78	2.94
201505	197	2,427	36	427.42	3.03
201507	368	3,347	-20	428.34	3.40
201508	0	10	0	421.45	3.86
201509	0	8	0	411.35	1.47
201511	336	6,797	-107	408.50	2.30
201601	0	25	0	408.87	2.20
201603	0	2	0	409.88	2.20
201607	0	16	0	409.51	2.20
201609	0	2	0	397.84	1.29
201611	2	75	2	391.23	1.93
201711	0	1	0	389.21	2.30

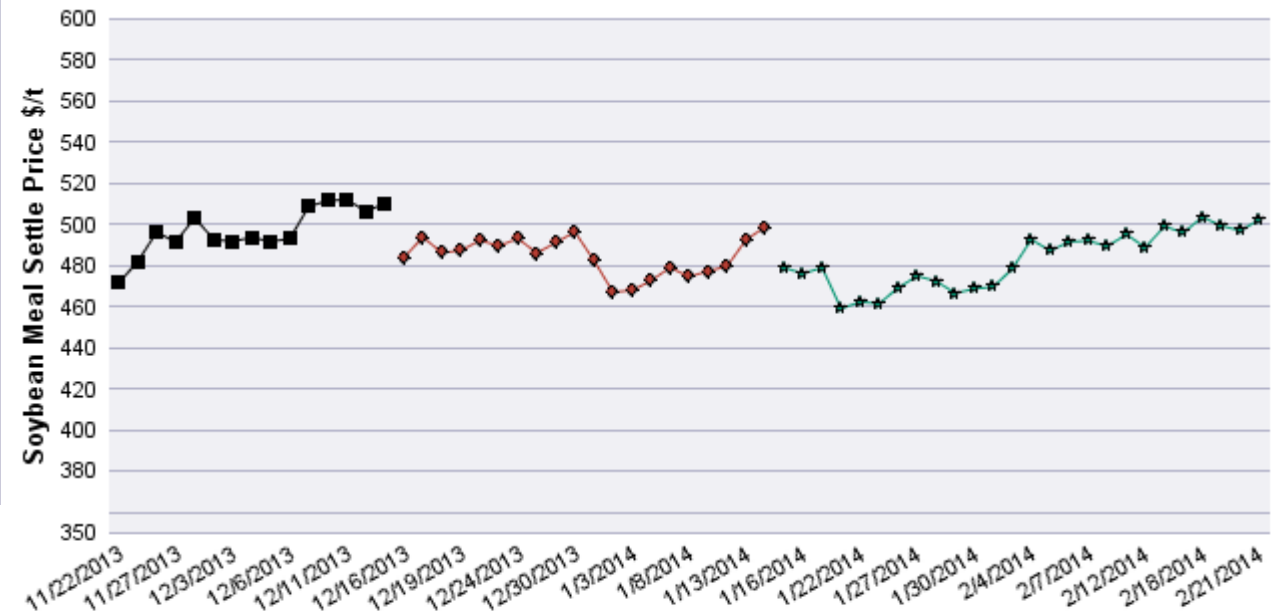


Soybean Futures Volume and OI Overview



SOYBEAN MEAL FUTURES VOI as of 2/21/14

Contract Month	Volume (Contracts)	Open Interest	OI Net Diff	Settle Price \$/t	Settle Price Diff \$/t
201403	36,459	46,355	-6,503	502.43	5.40
201405	49,135	161,954	8,580	485.24	3.53
201407	12,663	44,539	633	472.12	4.08
201408	1,588	8,624	106	451.84	4.41
201409	673	5,669	61	426.48	4.41
201410	908	8,145	137	397.49	2.43
201412	6,999	36,720	1,343	394.41	3.31
201501	204	3,933	-23	394.08	3.20
201503	302	4,157	73	394.74	3.42
201505	182	1,626	40	394.41	3.53
201507	266	875	73	395.18	3.86
201508	0	107	0	393.41	3.86
201509	0	63	0	390.00	3.86
201510	0	42	0	379.86	4.41
201512	58	414	55	378.31	4.41

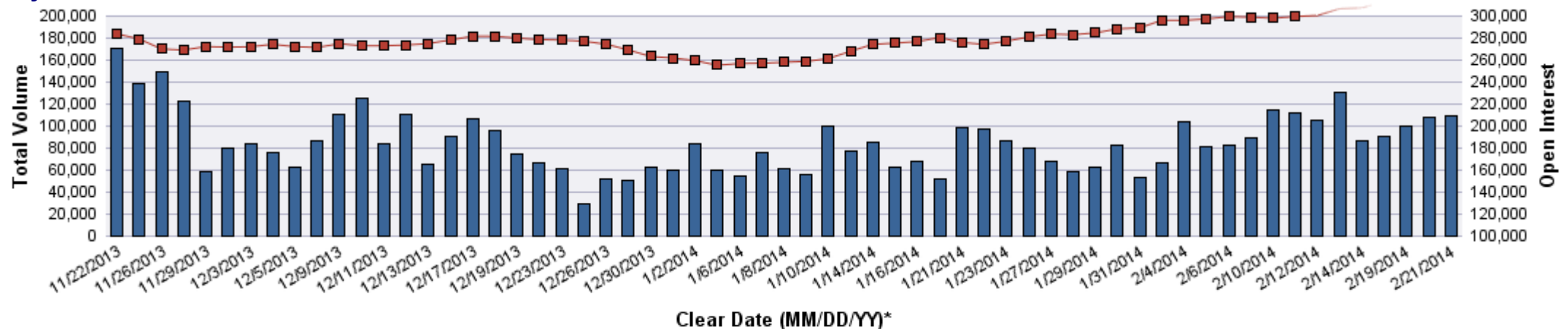


**Prices in the chart are for Front Month

Clear Date (MM/DD/YY)*

■ 201312 ◆ 201401 ★ 201403

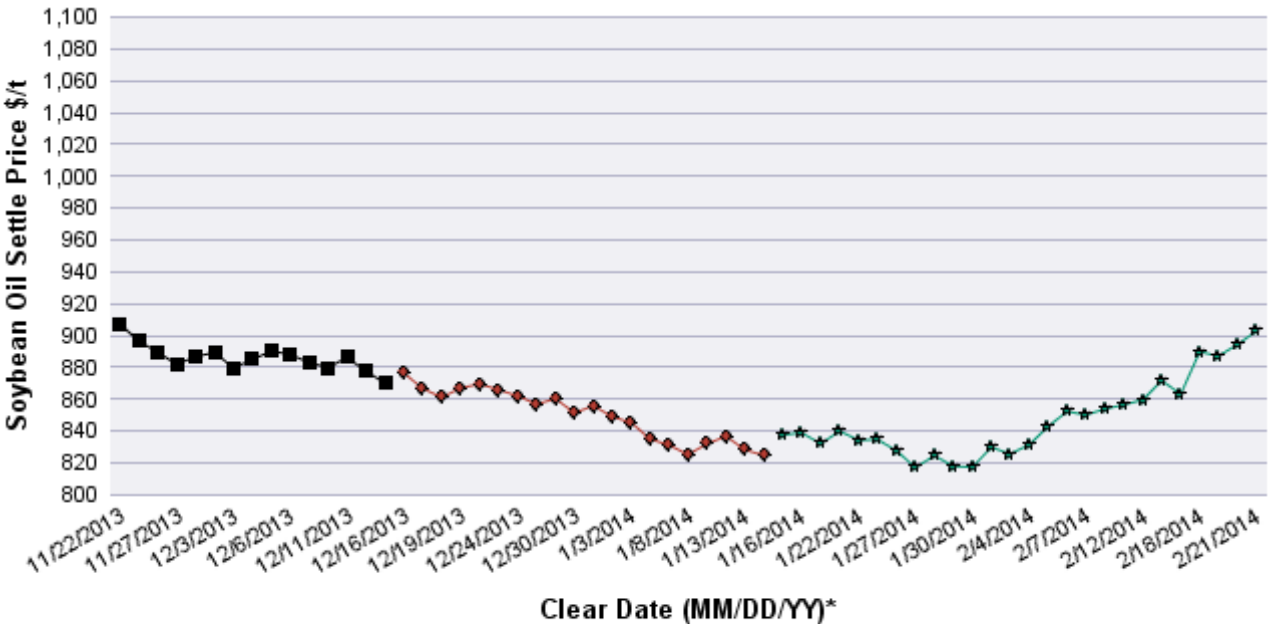
Soybean Meal Volume and OI Overview



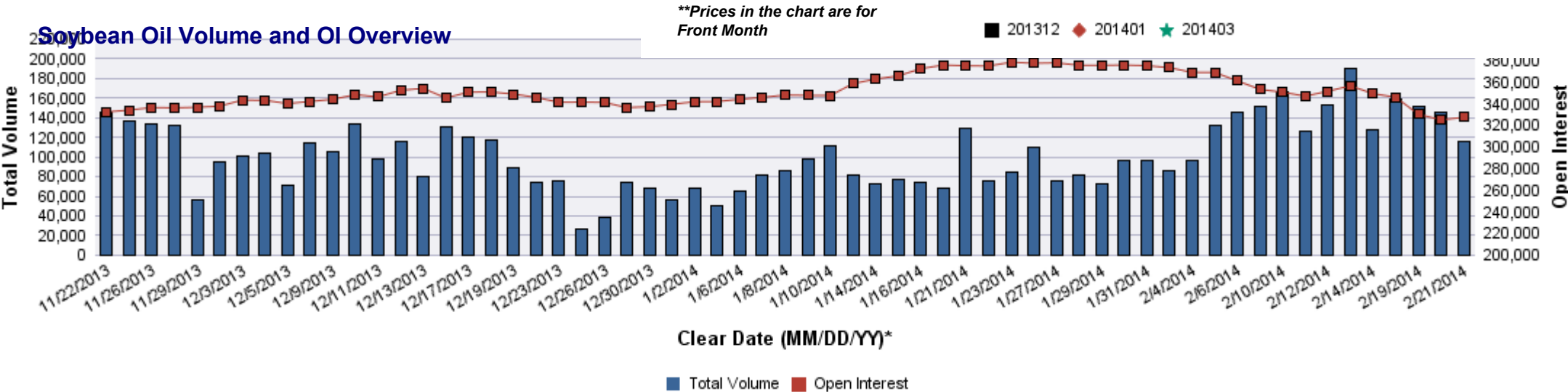
* Clear Date is in the format of MM/DD/YY

■ Total Volume ■ Open Interest

Contract Month	Volume (Contracts)	Open Interest	OI Net Diff	Settle Price \$/t	Settle Price Diff \$/t
201403	31,798	44,936	-5,636	902.79	8.38
201405	52,852	150,513	3,034	908.97	9.04
201407	17,606	62,784	1,736	913.60	8.38
201408	2,564	8,826	505	911.83	7.94
201409	1,419	8,695	214	906.98	7.50
201410	1,420	7,614	191	898.38	5.73
201412	7,885	35,991	1,992	896.18	5.07
201501	237	3,067	107	893.97	4.63
201503	293	2,655	161	895.30	4.85
201505	71	1,203	-3	897.72	5.95
201507	141	720	-13	899.04	4.85
201508	0	224	0	900.15	5.07
201509	0	190	0	899.93	5.51
201510	0	72	0	895.74	4.41
201512	0	144	0	894.42	4.85



Soybean Oil Volume and OI Overview



* Clear Date is in the format of MM/DD/YY