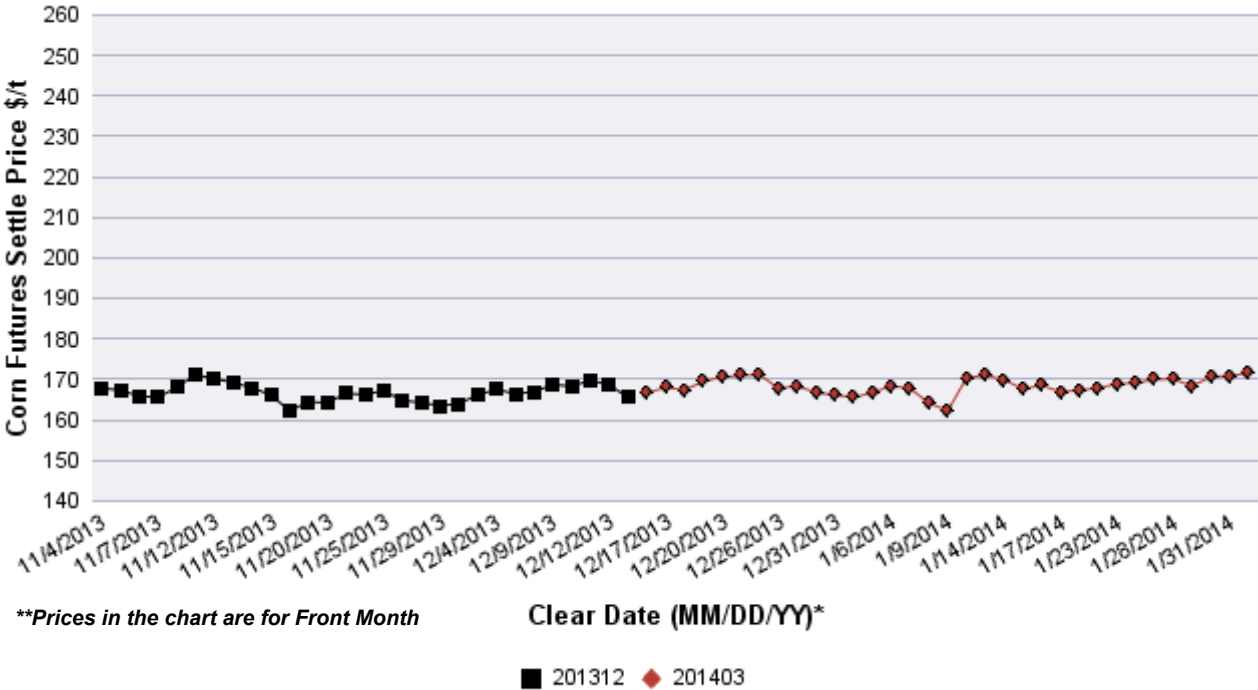
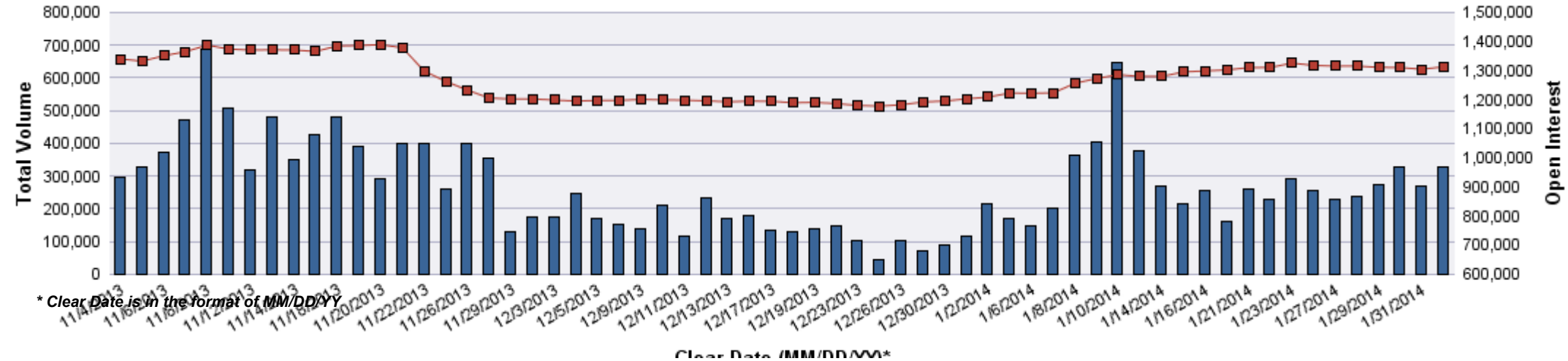


Contract Month	Volume (Contracts)	Open Interest	OI Net Diff	Settle Price \$/t	Settle Price Diff \$/t
201403	167,839	535,664	-13,152	171.55	0.69
201405	69,910	255,318	10,143	173.91	0.89
201407	50,730	183,466	5,405	175.88	1.08
201409	5,578	62,129	892	176.76	1.08
201412	30,311	227,157	4,585	178.34	1.18
201503	1,077	16,346	284	181.88	1.08
201505	220	2,728	-13	184.24	0.89
201507	367	3,670	231	185.42	0.59
201509	7	1,029	0	183.55	0.69
201512	1,080	23,771	-43	182.57	1.08
201603	6	148	6	185.42	0.89
201605	0	3	0	186.80	0.89
201607	51	623	42	187.29	0.69
201609	0	2	0	182.67	0.59
201612	5	1,215	1	180.11	0.59
201707	0	2	0	183.95	0.59
201712	7	17	7	179.52	-0.49



Corn Futures Volume and OI Overview

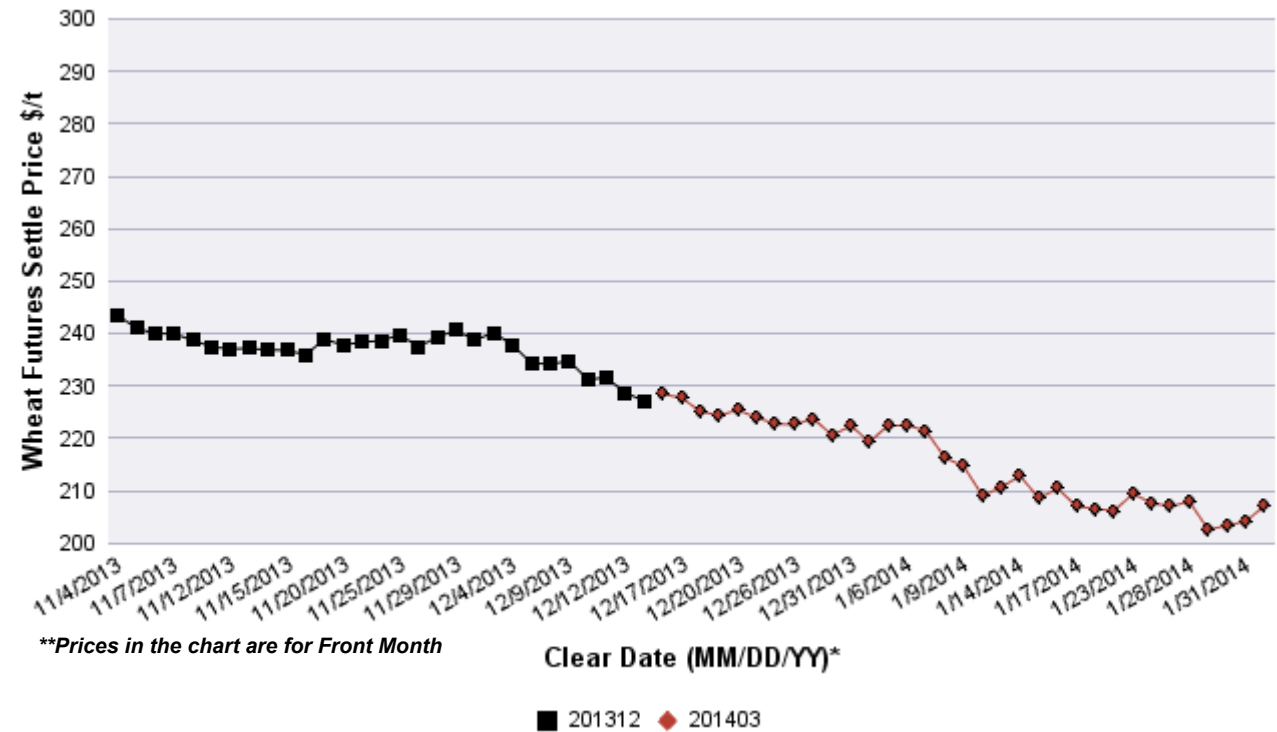


Clear Date (MM/DD/YY)

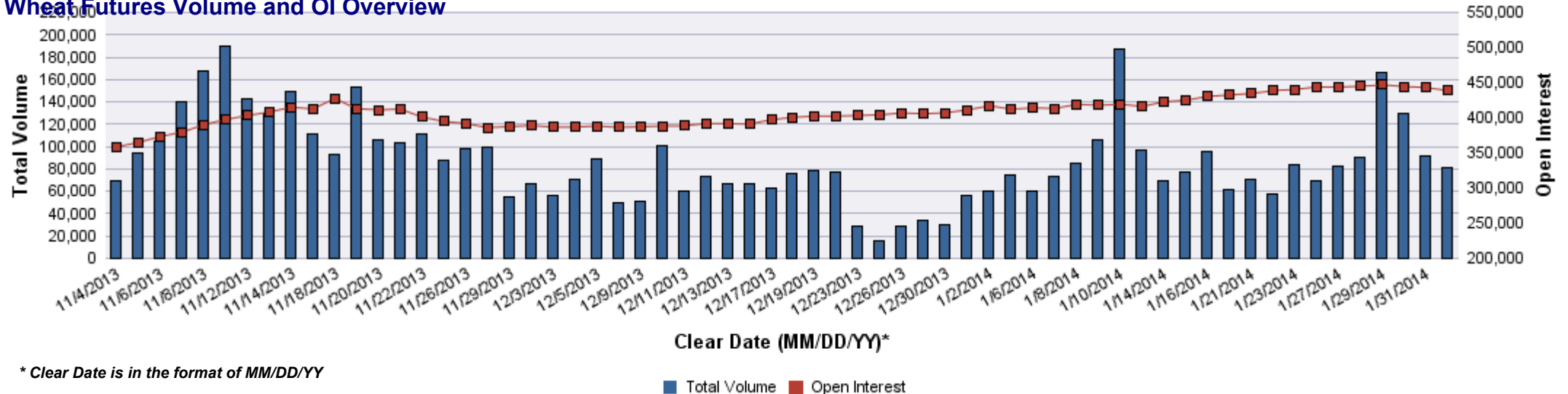
■ Total Volume ■ Open Interest

WHEAT FUTURES VOI as of 2/3/14

Contract Month	Volume (Contracts)	Open Interest	OI Net Diff	Settle Price \$/t	Settle Price Diff \$/t
201403	45,262	235,476	-5,822	207.14	2.94
201405	22,501	75,596	-215	207.88	2.76
201407	9,194	80,683	930	208.98	2.66
201409	1,177	12,048	4	212.01	2.57
201412	2,972	28,619	739	216.70	2.57
201503	389	4,825	158	220.46	2.66
201505	0	185	0	221.38	2.48
201507	4	1,044	1	219.91	2.39
201509	0	20	0	222.21	2.39
201512	0	269	0	225.61	2.48
201603	0	7	0	228.09	2.48
201607	2	20	2	228.73	5.79

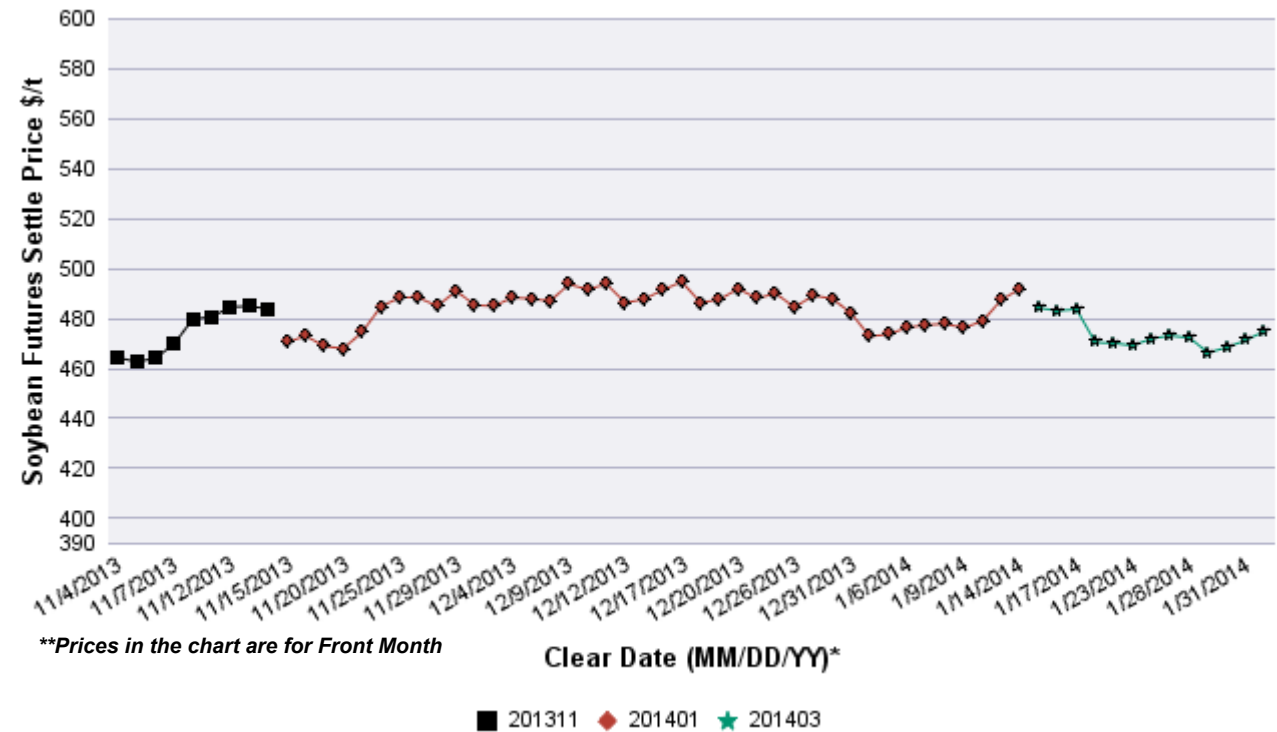


Wheat Futures Volume and OI Overview

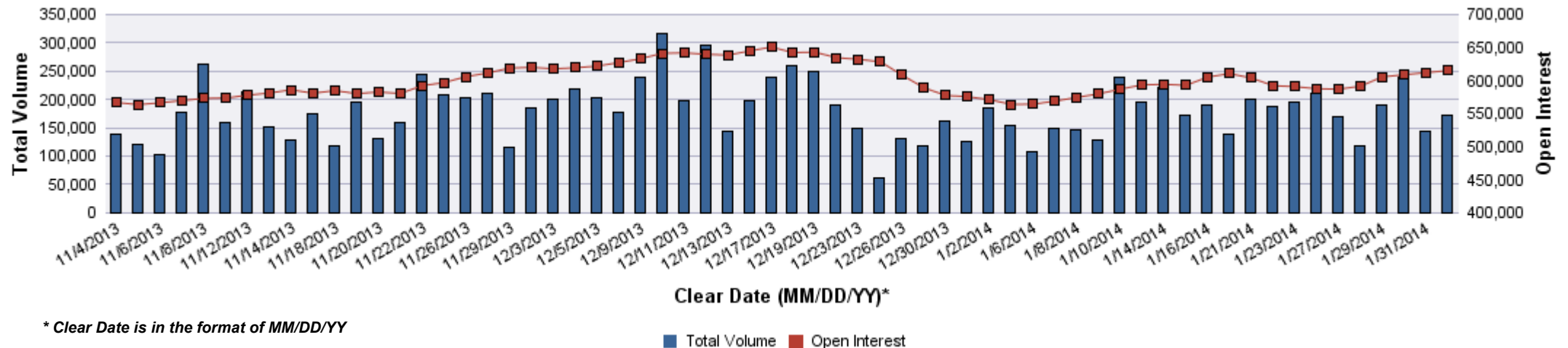


SOYBEAN FUTURES VOI as of 2/3/14

Contract Month	Volume (Contracts)	Open Interest	OI Net Diff	Settle Price \$/t	Settle Price Diff \$/t
201403	91,717	243,906	-1,136	475.00	3.67
201405	46,565	145,295	1,733	469.68	3.58
201407	18,500	86,253	993	463.80	3.77
201408	387	3,749	5	448.27	3.49
201409	451	3,202	83	422.92	2.39
201411	12,027	112,347	993	407.30	1.47
201501	719	6,702	246	409.14	1.38
201503	257	3,474	88	410.79	1.29
201505	230	1,773	13	411.25	1.19
201507	154	2,770	51	412.45	1.01
201508	0	5	0	409.23	1.01
201509	0	6	0	404.09	0.83
201511	225	5,642	75	402.89	0.83
201601	0	25	0	403.26	0.83
201603	0	2	0	403.35	0.83
201607	0	16	0	403.91	0.28
201609	0	2	0	393.98	0.37
201611	0	53	0	386.82	0.55
201711	0	1	0	385.26	0.37

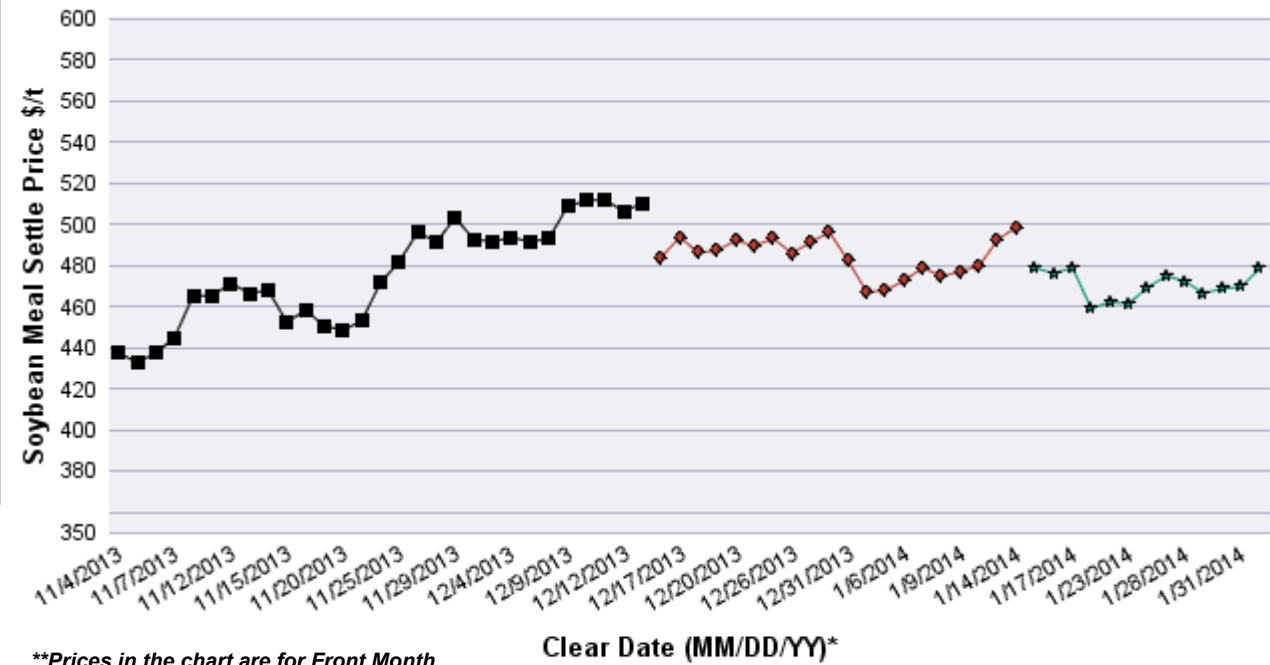


Soybean Futures Volume and OI Overview

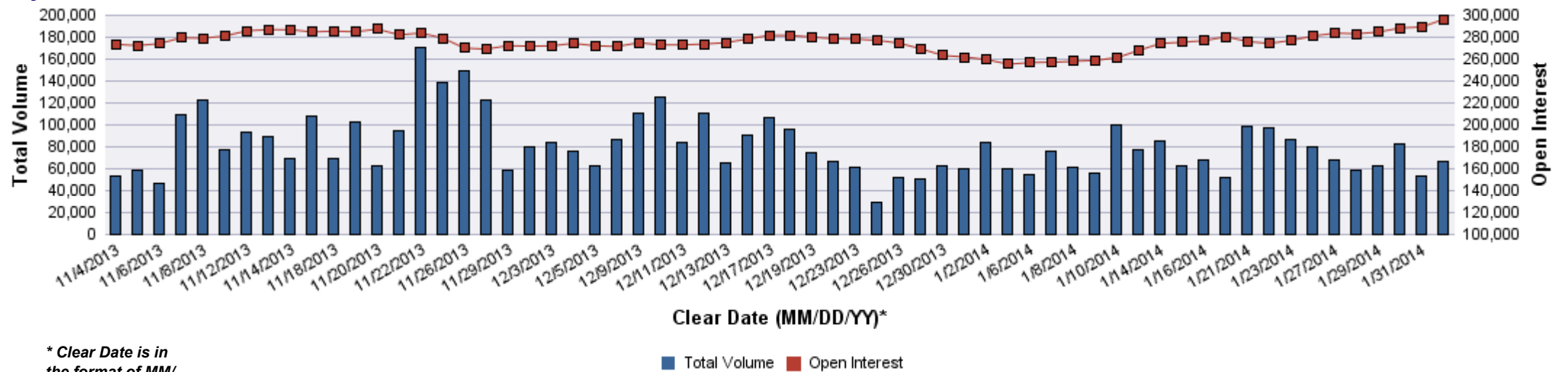


SOYBEAN MEAL FUTURES VOI as of 2/3/14

Contract Month	Volume (Contracts)	Open Interest	OI Net Diff	Settle Price \$/t	Settle Price Diff \$/t
201403	36,766	144,076	4,388	478.40	8.71
201405	16,890	70,952	2,311	459.77	6.61
201407	8,840	30,197	-284	448.09	6.61
201408	591	6,958	109	431.66	5.95
201409	328	4,321	72	410.72	4.85
201410	139	6,739	0	385.59	2.65
201412	2,431	27,258	372	381.40	2.65
201501	297	2,077	44	380.52	2.31
201503	70	2,321	20	381.51	2.43
201505	147	764	50	380.85	2.20
201507	1	364	0	381.62	1.98
201508	0	34	0	379.97	1.87
201509	0	32	0	377.32	1.54
201510	0	28	0	374.79	1.98
201512	0	342	0	372.58	1.98

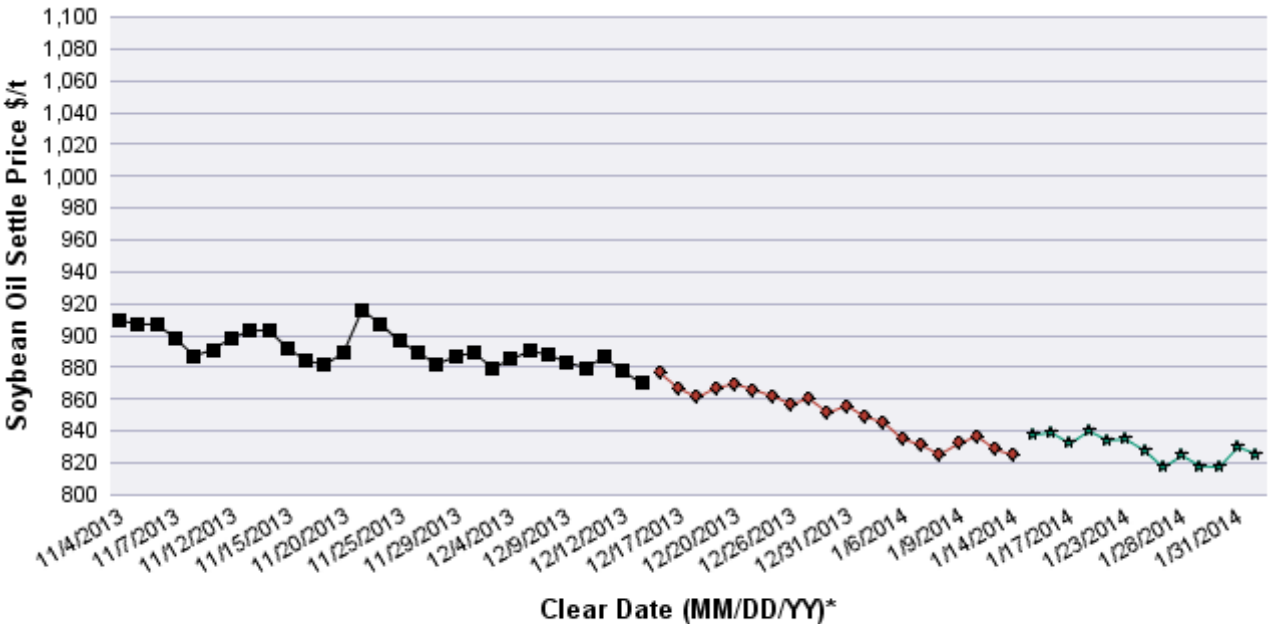


Soybean Meal Volume and OI Overview

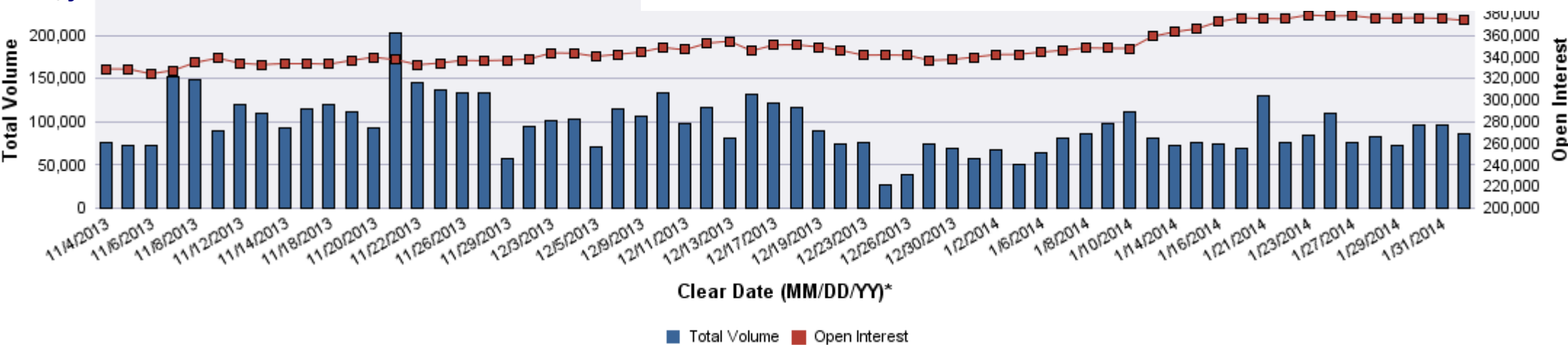


* Clear Date is in the format of MM/DD/YY

Contract Month	Volume (Contracts)	Open Interest	OI Net Diff	Settle Price \$/t	Settle Price Diff \$/t
201403	44,713	193,550	-1,845	825.63	-4.19
201405	24,811	76,895	214	832.47	-3.75
201407	10,495	48,770	53	839.74	-3.53
201408	525	7,799	77	842.83	-3.31
201409	433	7,987	2	843.93	-3.09
201410	168	7,106	32	843.27	-2.87
201412	4,066	25,417	-253	846.13	-2.20
201501	471	2,370	-14	849.88	-1.32
201503	138	1,865	-8	854.51	-1.76
201505	151	1,042	10	859.14	-2.43
201507	1	649	1	864.21	-2.20
201508	0	89	0	865.76	-1.98
201509	0	107	0	866.42	-1.76
201510	0	63	0	860.68	-2.43
201512	0	142	0	863.33	-1.76



Soybean Oil Volume and OI Overview



* Clear Date is in the format of MM/DD/YY