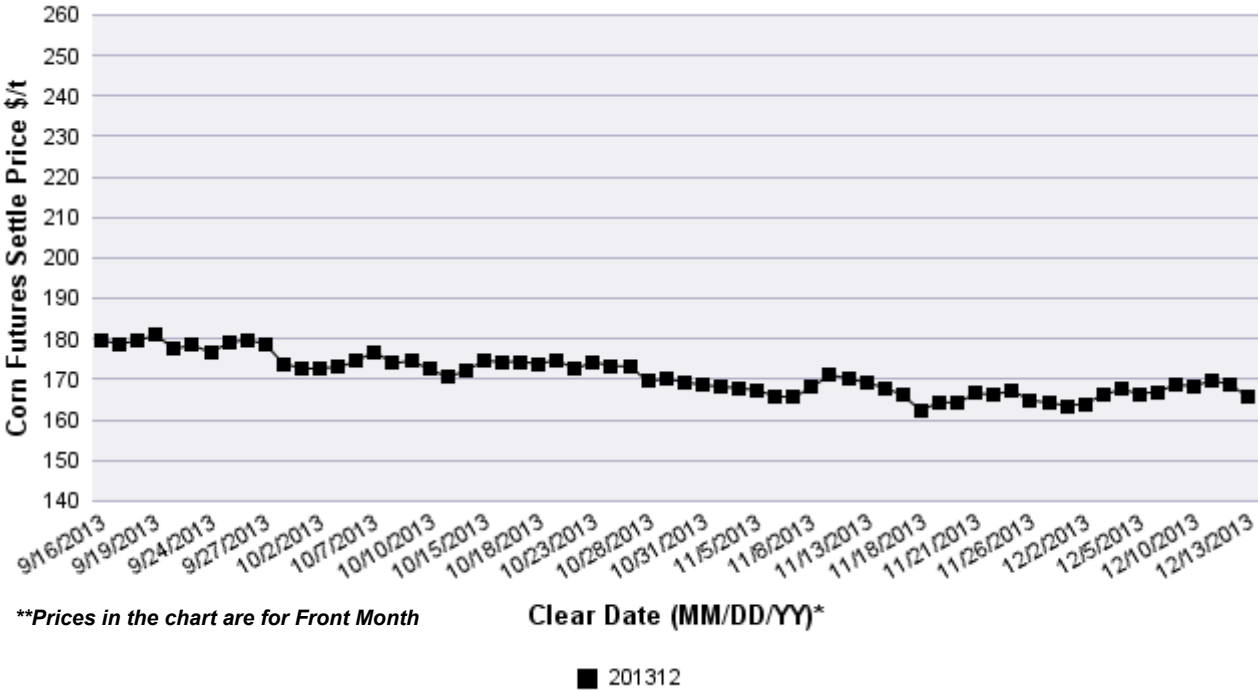
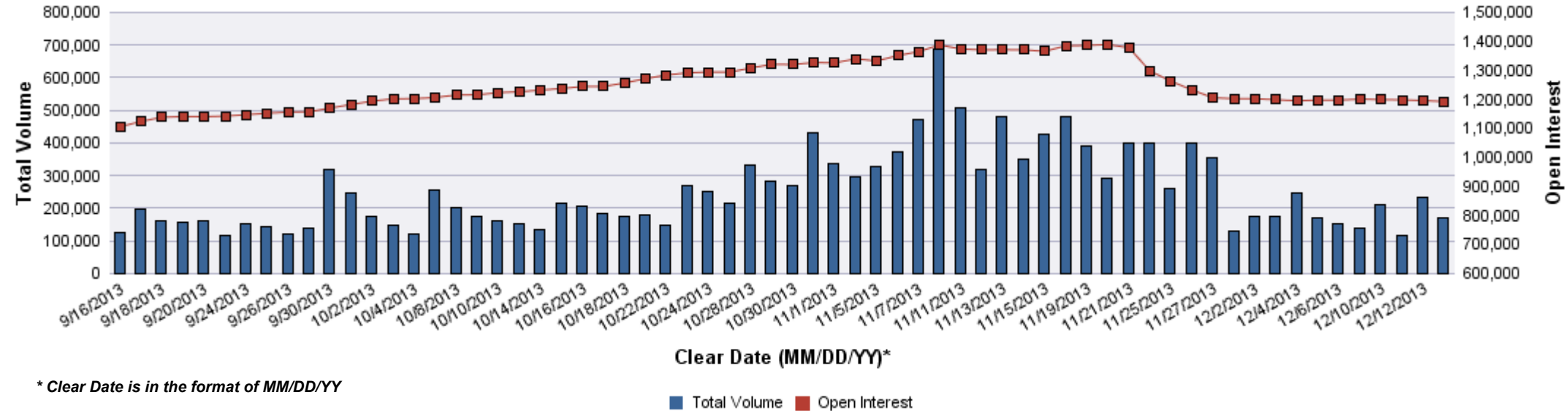


Contract Month	Volume (Contracts)	Open Interest	OI Net Diff	Settle Price \$/t	Settle Price Diff \$/t
201312	294	33	-227	165.54	-3.05
201403	106,098	664,432	-5,692	167.51	-3.44
201405	26,383	167,149	2,128	170.76	-3.44
201407	15,387	118,437	358	173.52	-3.35
201409	4,071	43,570	85	175.58	-3.54
201412	16,518	171,909	-473	178.14	-3.54
201503	998	6,998	133	182.57	-3.44
201505	296	1,098	113	185.33	-3.25
201507	189	2,083	34	186.70	-2.95
201509	22	669	14	183.46	-2.85
201512	664	15,138	196	183.75	-2.85
201607	4	532	-1	188.48	-2.46
201612	30	803	-8	184.83	-0.79



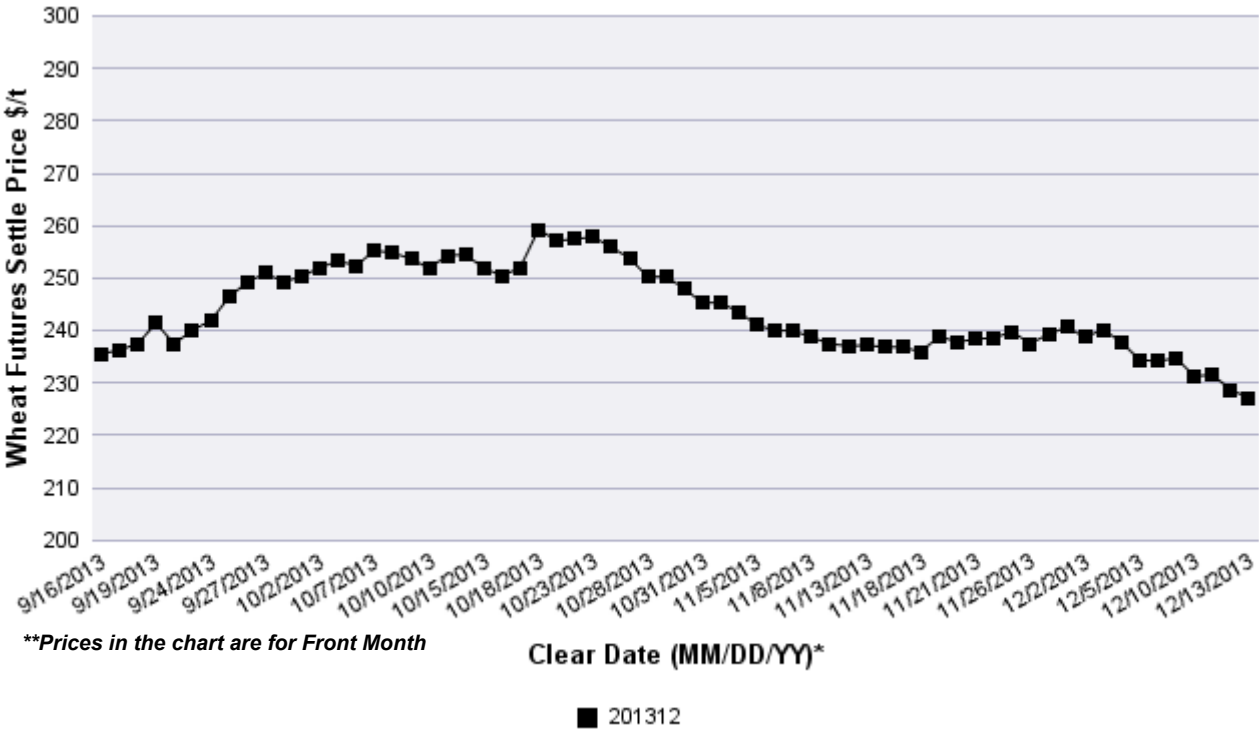
Corn Futures Volume and OI Overview



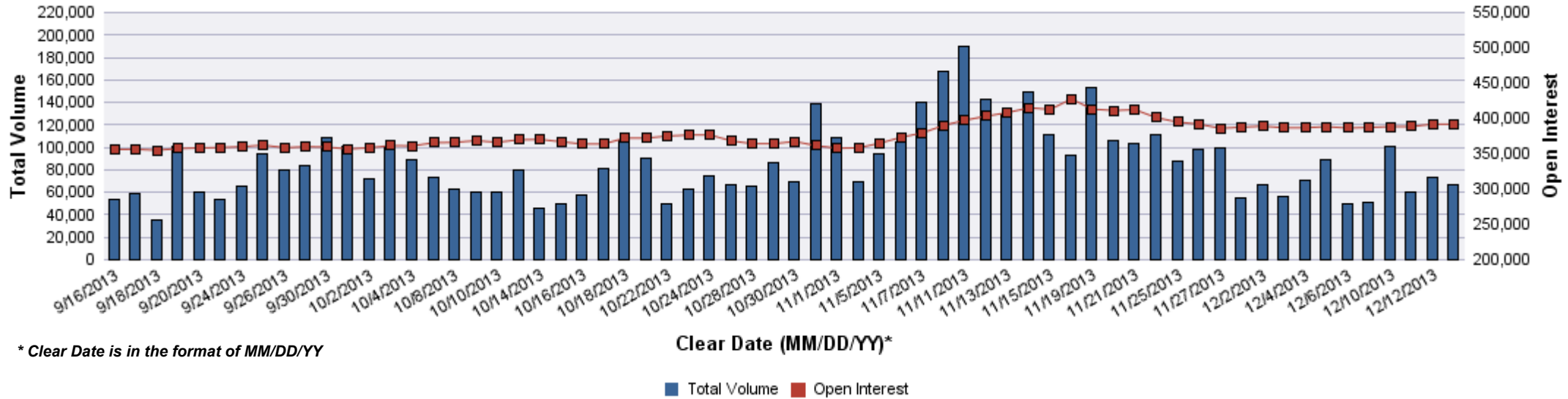
WHEAT FUTURES VOI as of 12/13/13



Contract Month	Volume (Contracts)	Open Interest	OI Net Diff	Settle Price \$/t	Settle Price Diff \$/t
201312	20	83	-8	227.17	-1.56
201403	41,506	248,845	-287	231.03	-1.84
201405	11,501	53,457	-134	233.23	-2.02
201407	11,146	61,409	217	234.06	-1.93
201409	1,030	8,380	222	237.36	-2.11
201412	1,504	16,615	-136	242.51	-1.93
201503	19	1,637	5	245.36	-1.75
201505	2	116	0	245.63	-1.56
201507	5	924	-1	242.78	-1.75
201509	0	16	0	244.80	-1.65
201512	0	234	-2	248.85	-2.11
201603	0	6	0	250.41	-2.11
201607	0	15	0	244.90	-2.11



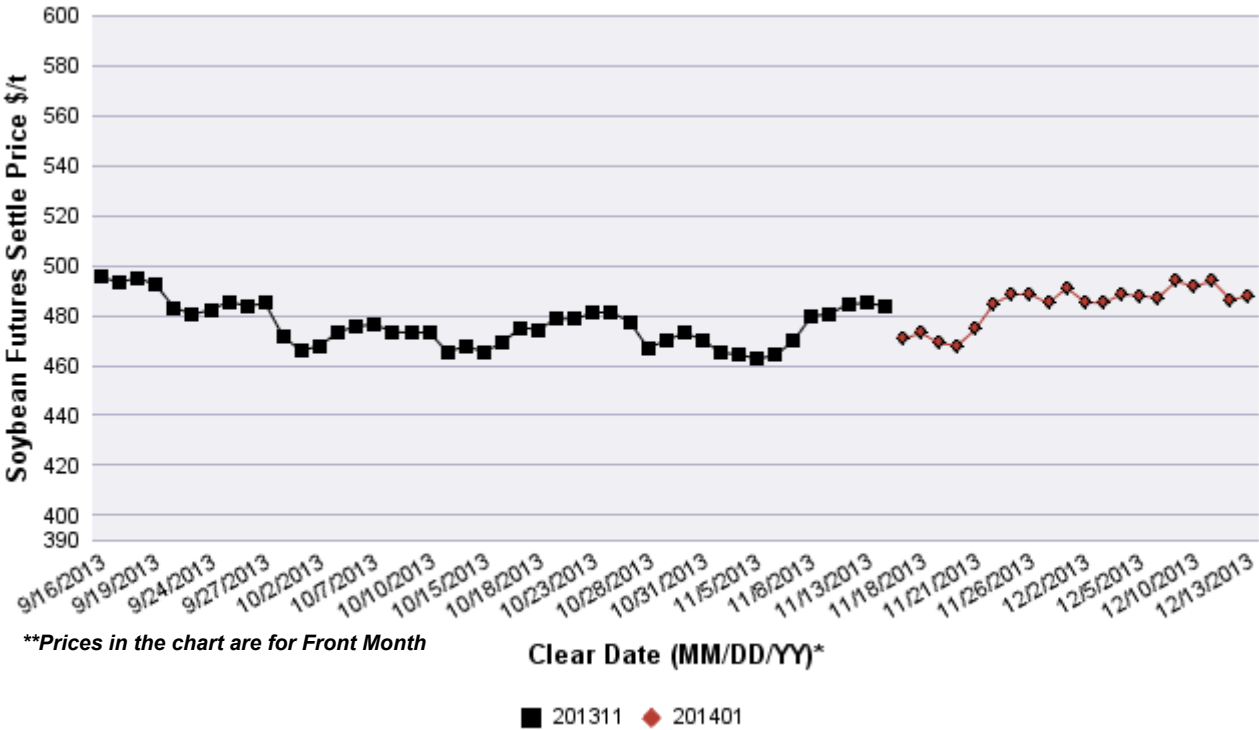
Wheat Futures Volume and OI Overview



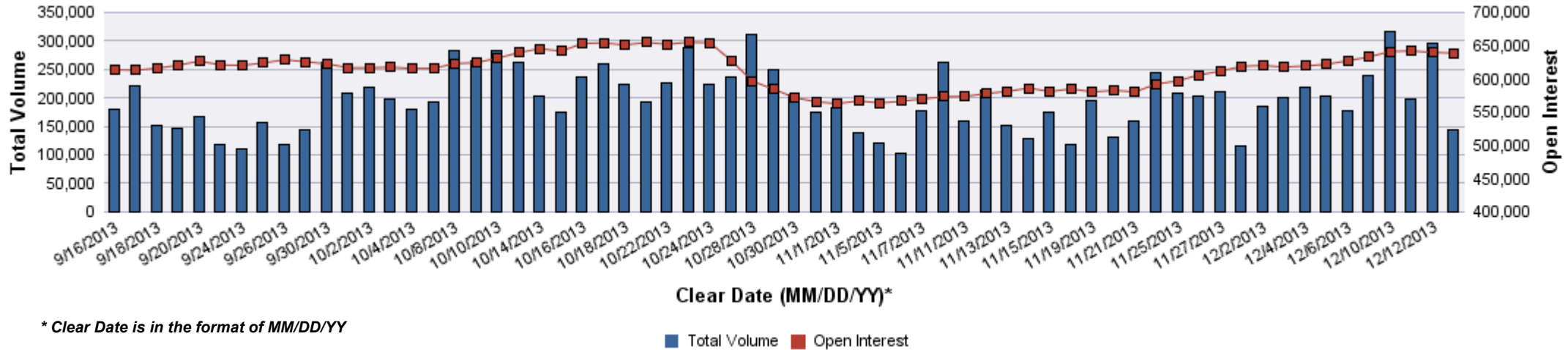
SOYBEAN FUTURES VOI as of 12/13/13



Contract Month	Volume (Contracts)	Open Interest	OI Net Diff	Settle Price \$/t	Settle Price Diff \$/t
201401	73,351	168,486	-7,072	487.77	1.38
201403	45,706	210,420	3,940	482.72	0.83
201405	12,449	105,149	1,090	476.57	0.73
201407	6,667	65,884	76	471.79	0.28
201408	171	2,832	1	460.77	0.00
201409	195	1,652	-4	439.91	-0.37
201411	4,743	75,190	520	425.40	-0.18
201501	175	3,137	106	427.24	-0.18
201503	72	1,225	41	428.62	-0.09
201505	21	745	7	430.09	-0.09
201507	7	1,339	4	432.66	0.18
201508	0	3	0	429.07	0.00
201509	0	5	0	423.47	-0.37
201511	115	2,675	93	421.36	-0.73
201601	0	7	0	422.74	-0.73
201603	0	2	0	422.55	-0.73
201607	0	3	0	419.25	-0.73
201611	1	36	1	407.40	-1.10

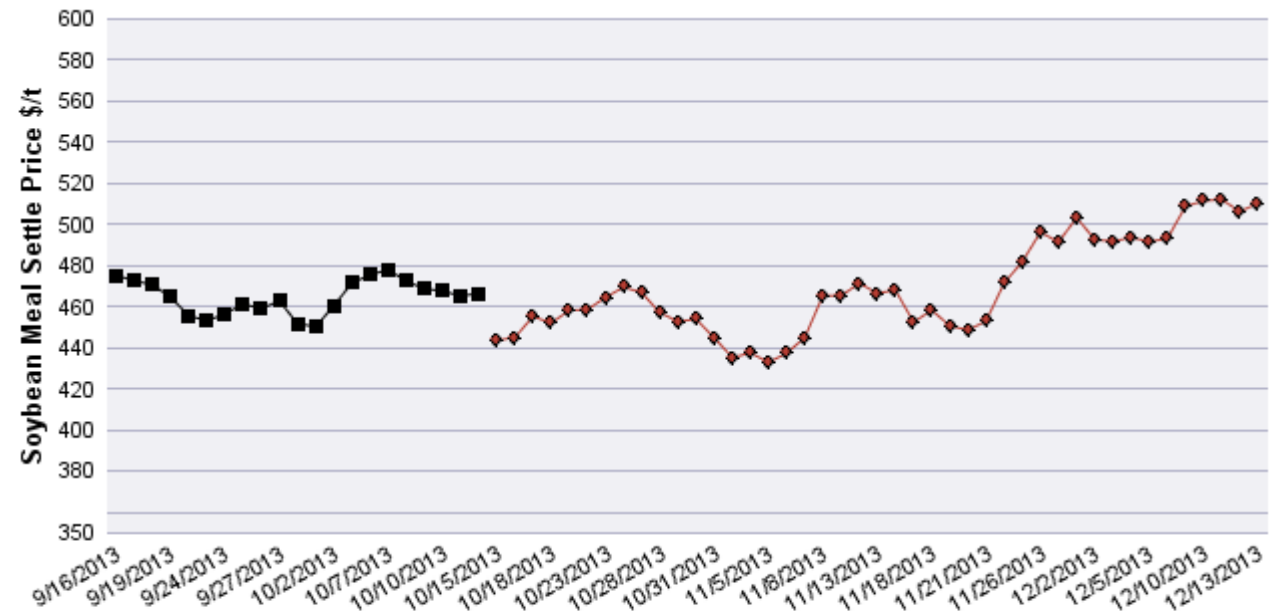


Soybean Futures Volume and OI Overview



SOYBEAN MEAL FUTURES VOI as of 12/13/13

Contract Month	Volume (Contracts)	Open Interest	OI Net Diff	Settle Price \$/t	Settle Price Diff \$/t
201312	54	1	-52	510.26	3.86
201401	32,419	67,260	-3,754	476.86	2.76
201403	22,965	115,777	4,582	466.50	1.87
201405	5,699	41,037	210	454.92	1.76
201407	1,887	19,370	56	446.22	1.43
201408	286	4,719	0	432.88	1.43
201409	173	3,587	30	414.25	0.22
201410	343	4,479	26	391.43	0.33
201412	655	17,314	247	388.67	0.55
201501	31	693	15	389.12	0.44
201503	59	443	56	389.78	0.66
201505	0	130	0	389.56	0.11
201507	0	80	0	391.43	0.11
201508	0	7	0	387.79	0.11
201509	0	7	0	388.01	0.11
201510	0	13	0	383.16	0.00
201512	0	202	0	378.31	0.22

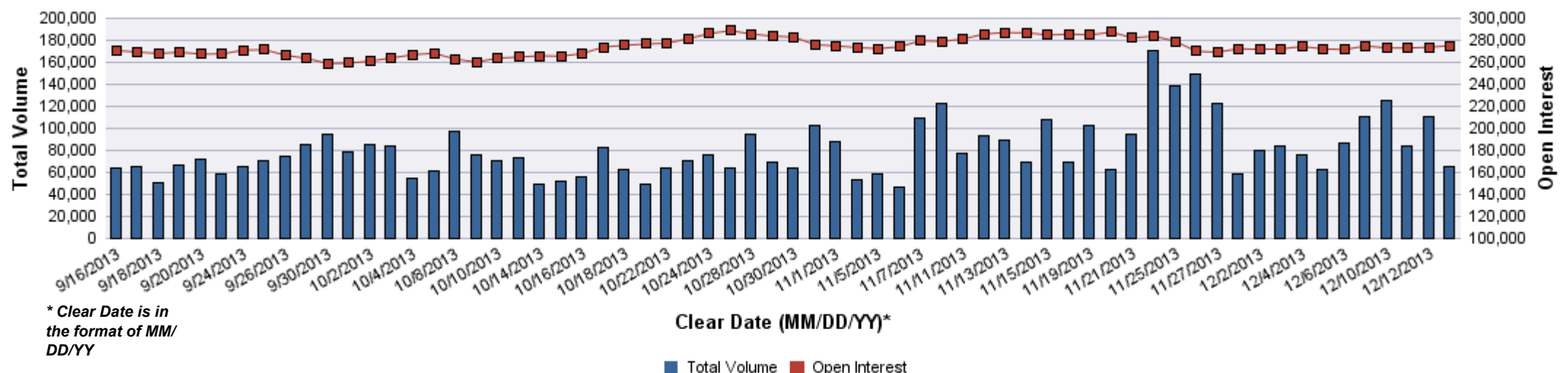


**Prices in the chart are for Front Month

Clear Date (MM/DD/YY)*

■ 201310 ◆ 201312

Soybean Meal Volume and OI Overview

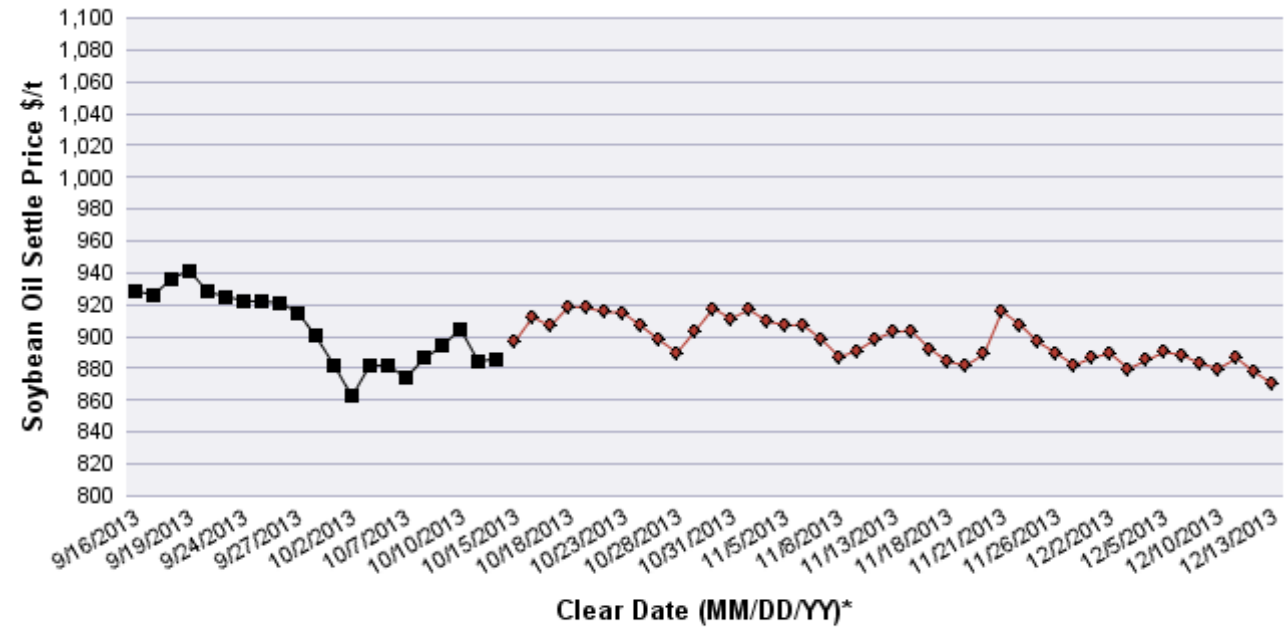


* Clear Date is in the format of MM/DD/YY

■ Total Volume ■ Open Interest

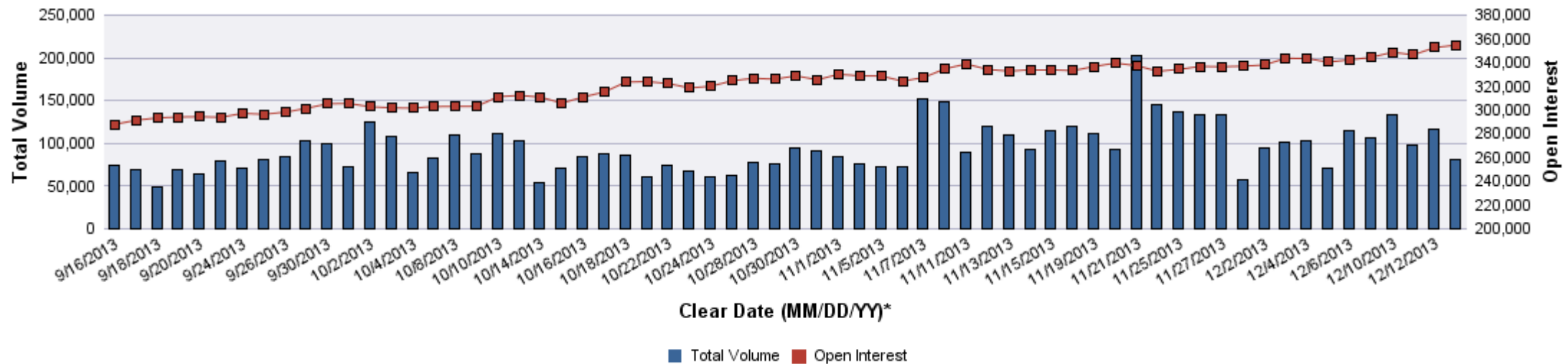
SOYBEAN OIL FUTURES VOI as of 12/13/13

Contract Month	Volume (Contracts)	Open Interest	OI Net Diff	Settle Price \$/t	Settle Price Diff \$/t
201312	137	117	-7	870.16	-7.28
201401	37,932	92,875	-2,211	878.10	-3.53
201403	27,523	142,794	3,769	886.26	-3.75
201405	8,707	49,411	-14	894.86	-4.19
201407	4,046	34,356	131	903.45	-3.97
201408	708	4,285	12	906.54	-4.19
201409	305	5,920	51	908.75	-3.97
201410	262	4,423	86	909.63	-3.97
201412	662	16,620	84	915.36	-4.19
201501	75	1,070	15	920.87	-3.97
201503	116	1,102	49	927.93	-3.53
201505	64	952	0	933.66	-3.09
201507	71	523	38	939.83	-1.76
201508	0	69	0	940.71	-1.76
201509	0	63	0	939.83	-1.76
201510	0	56	0	937.18	-4.19
201512	0	80	0	938.29	-3.97



**Prices in the chart are for Front Month

Soybean Oil Volume and OI Overview



* Clear Date is in the format of MM/DD/YY