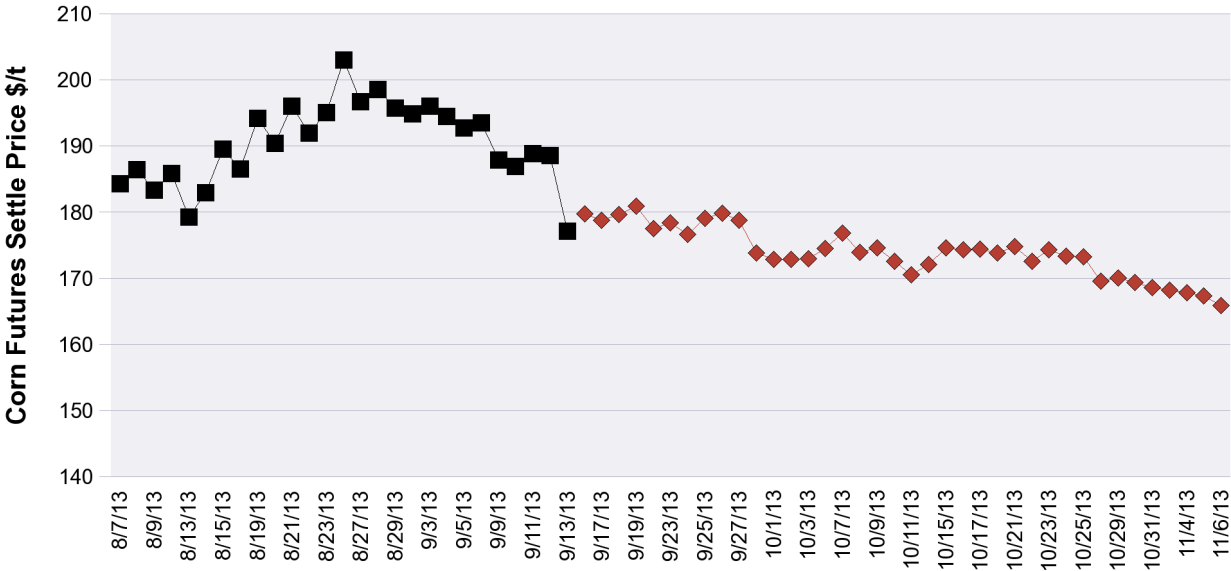


Contract Month	Volume (Contracts)	Open Interest	OI Net Diff	Settle Price \$/t	Settle Price Diff \$/t
201312	203,384	613,604	-19,823	165.84	-1.48
201403	112,881	359,846	26,646	169.87	-1.57
201405	19,826	86,739	4,377	173.02	-1.48
201407	14,228	93,632	1,872	175.78	-1.48
201409	1,904	34,608	574	178.24	-1.57
201412	20,988	144,026	4,723	181.78	-1.57
201503	106	3,978	22	185.42	-1.67
201505	23	442	4	187.39	-1.67
201507	21	1,639	12	188.48	-1.57
201509	4	309	1	185.82	-1.48
201512	272	11,371	34	187.59	-1.38
201607	1	448	1	192.02	-1.18
201612	15	649	12	187.88	-0.98

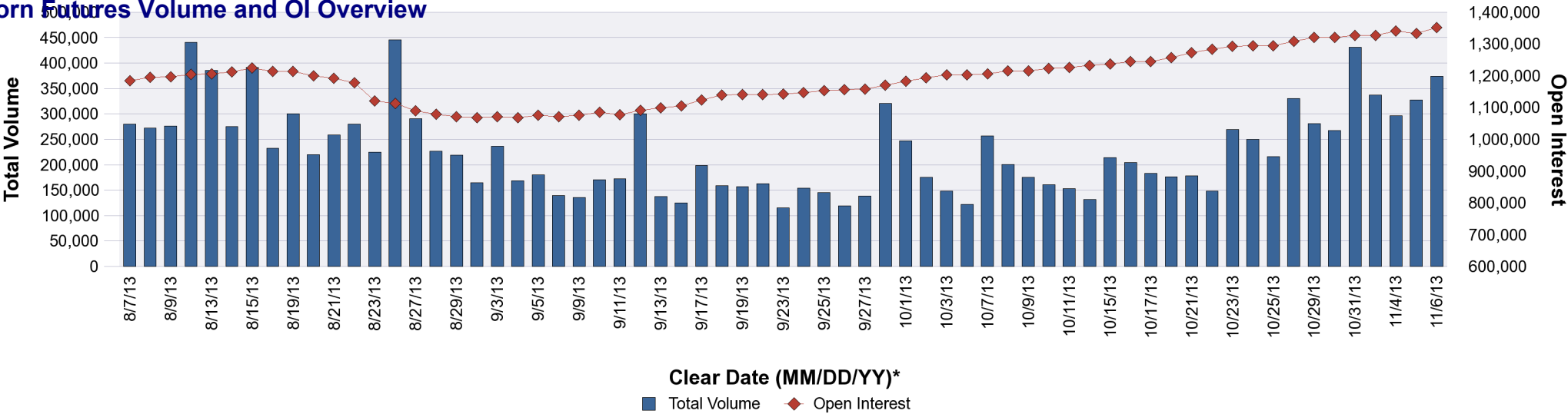


**Prices in the chart are for Front Month

Clear Date (MM/DD/YY)*

■ 201309 ◆ 201312

Corn Futures Volume and OI Overview

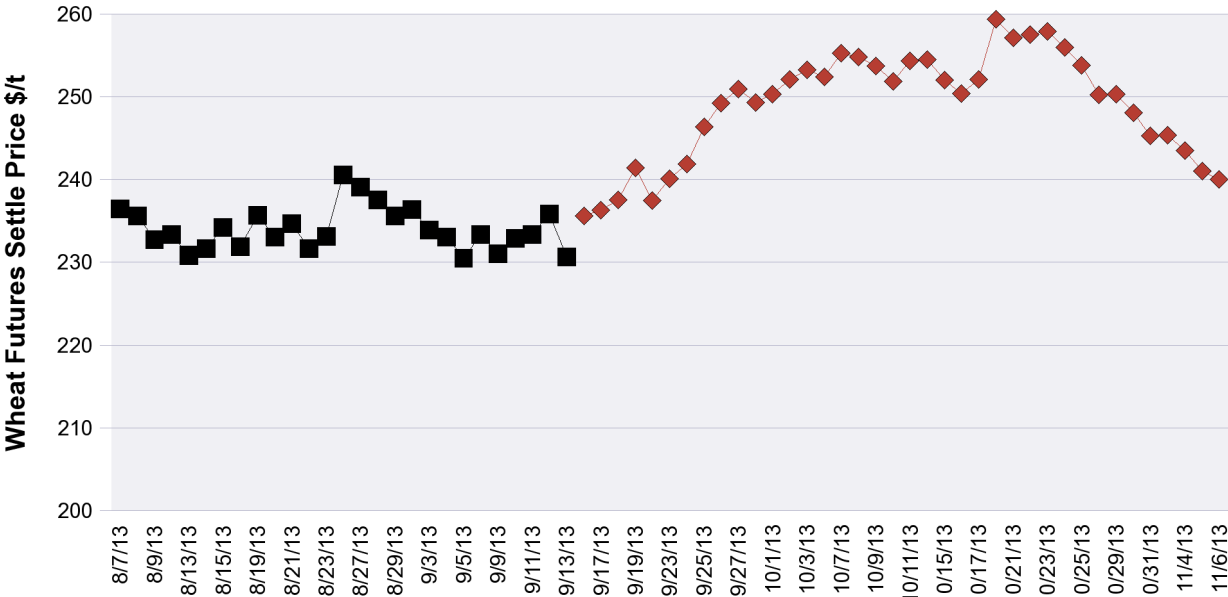


* Clear Date is in the format of MM/DD/YY

WHEAT FUTURES VOI as of 11/6/13

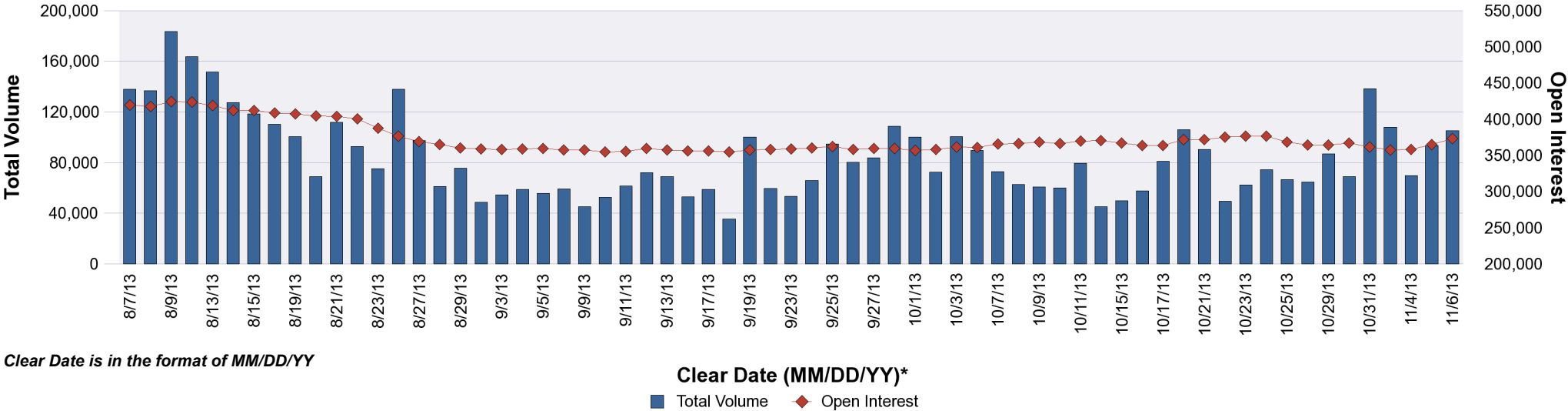


Contract Month	Volume (Contracts)	Open Interest	OI Net Diff	Settle Price \$/t	Settle Price Diff \$/t
201312	57,175	180,940	-2,682	240.03	-1.01
201403	33,785	103,598	9,043	243.52	-1.65
201405	6,764	27,165	1,127	245.54	-1.75
201407	5,297	43,104	925	245.17	-1.29
201409	494	4,654	39	248.48	-1.19
201412	1,554	11,907	30	252.98	-1.01
201503	32	1,038	-11	255.00	-1.19
201505	14	78	-2	254.91	-1.47
201507	13	830	0	252.89	-1.93
201509	0	14	0	254.45	-1.93
201512	2	123	2	259.59	-1.65
201603	0	2	0	260.60	-1.65
201607	0	15	0	255.74	-1.65



**Prices in the chart are for Front Month

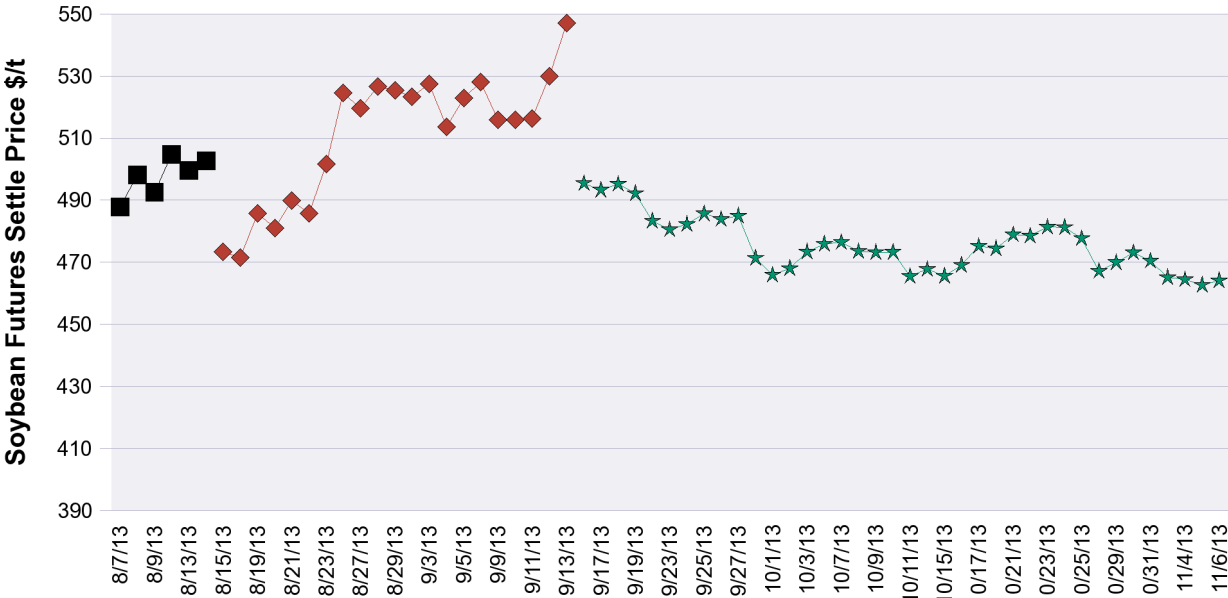
Wheat Futures Volume and OI Overview



SOYBEAN FUTURES VOI as of 11/6/13

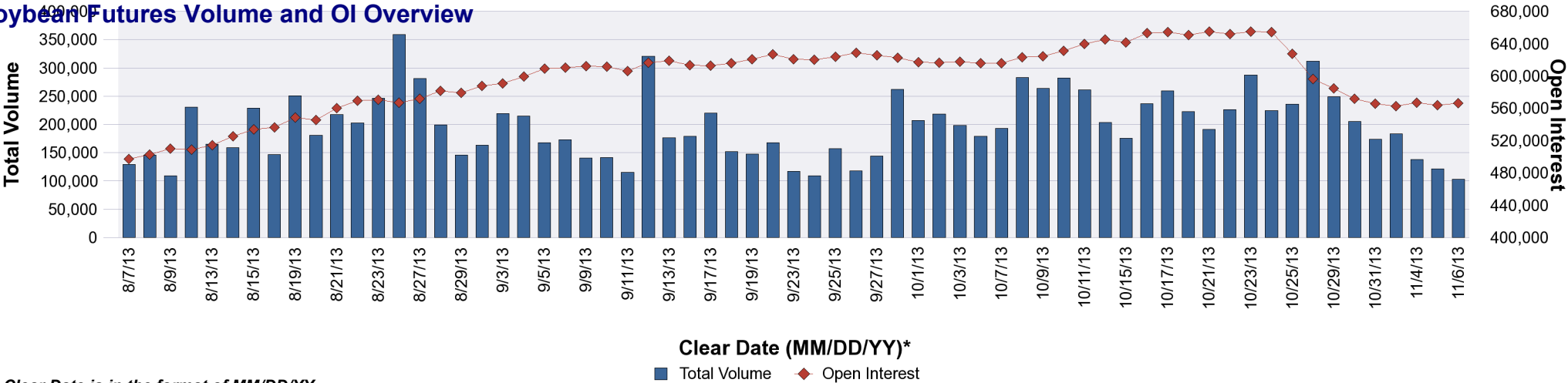


Contract Month	Volume (Contracts)	Open Interest	OI Net Diff	Settle Price \$/t	Settle Price Diff \$/t
201311	3,332	5,238	-1,232	464.07	1.38
201401	61,513	275,295	1,460	461.13	1.75
201403	15,359	91,896	80	455.81	1.56
201405	11,583	81,741	712	452.50	1.56
201407	7,030	53,721	72	451.40	1.47
201408	178	2,723	54	446.62	1.47
201409	35	825	-7	433.02	1.19
201411	3,683	53,017	1,472	422.64	1.84
201501	134	501	94	424.94	1.93
201503	17	288	9	426.41	1.93
201505	4	47	2	427.51	1.65
201507	5	107	2	429.53	1.75
201508	0	4	0	425.95	1.29
201509	0	4	0	421.27	1.84
201511	11	1,000	6	420.99	1.75
201611	0	16	0	414.84	1.65



**Prices in the chart are for Front Month

Soybean Futures Volume and OI Overview

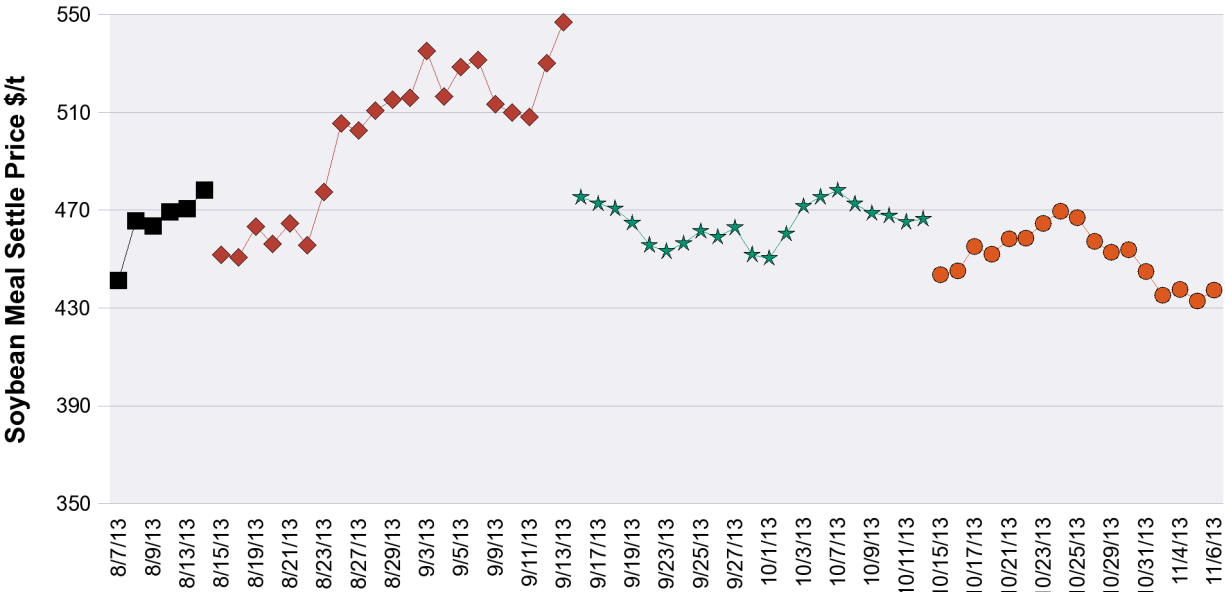


* Clear Date is in the format of MM/DD/YY

SOYBEAN MEAL FUTURES VOI as of 11/6/13



Contract Month	Volume (Contracts)	Open Interest	OI Net Diff	Settle Price \$/t	Settle Price Diff \$/t
201312	24,058	105,157	-961	437.40	4.41
201401	9,024	72,304	116	429.79	3.53
201403	5,729	43,388	1,032	421.52	2.87
201405	2,750	19,478	76	415.46	2.98
201407	1,604	15,456	97	413.04	2.87
201408	248	4,552	40	408.41	3.09
201409	382	2,987	119	397.71	3.09
201410	117	2,602	63	380.63	3.09
201412	2,243	7,898	1,348	377.98	2.54
201501	1	288	0	378.75	2.43
201503	0	209	0	380.30	2.31
201505	0	8	0	380.74	2.31
201512	0	2	0	376.77	1.76

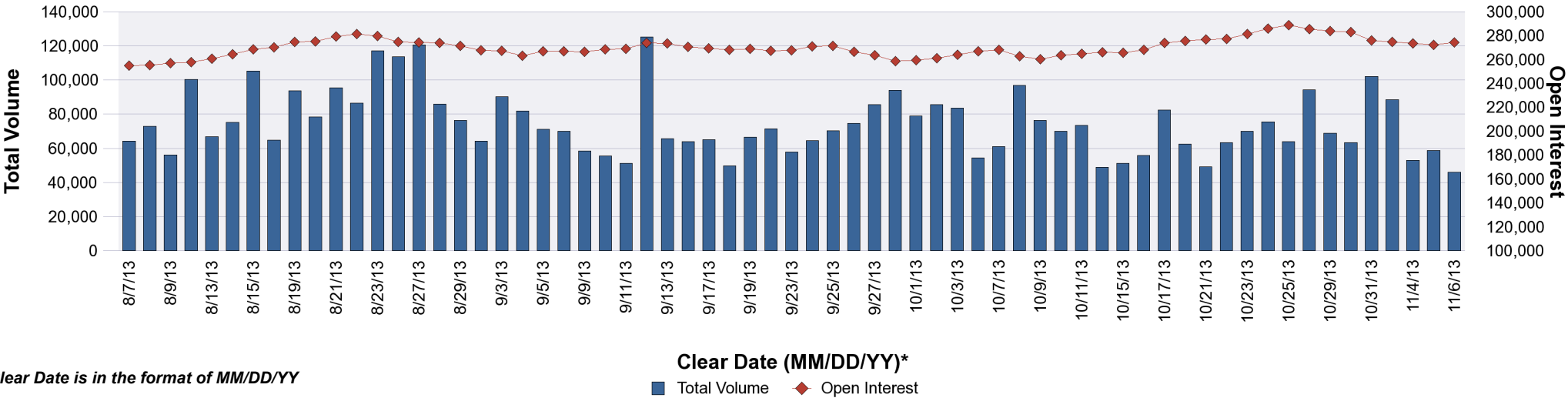


**Prices in the chart are for Front Month

Clear Date (MM/DD/YY)*

■ 201308 ◆ 201309 ★ 201310 ● 201312

Soybean Meal Volume and OI Overview

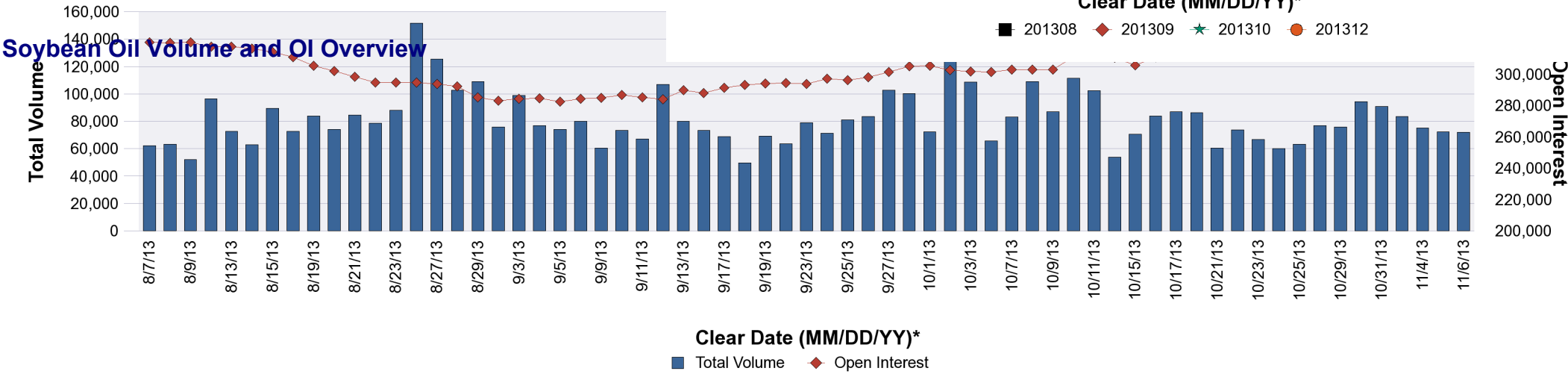
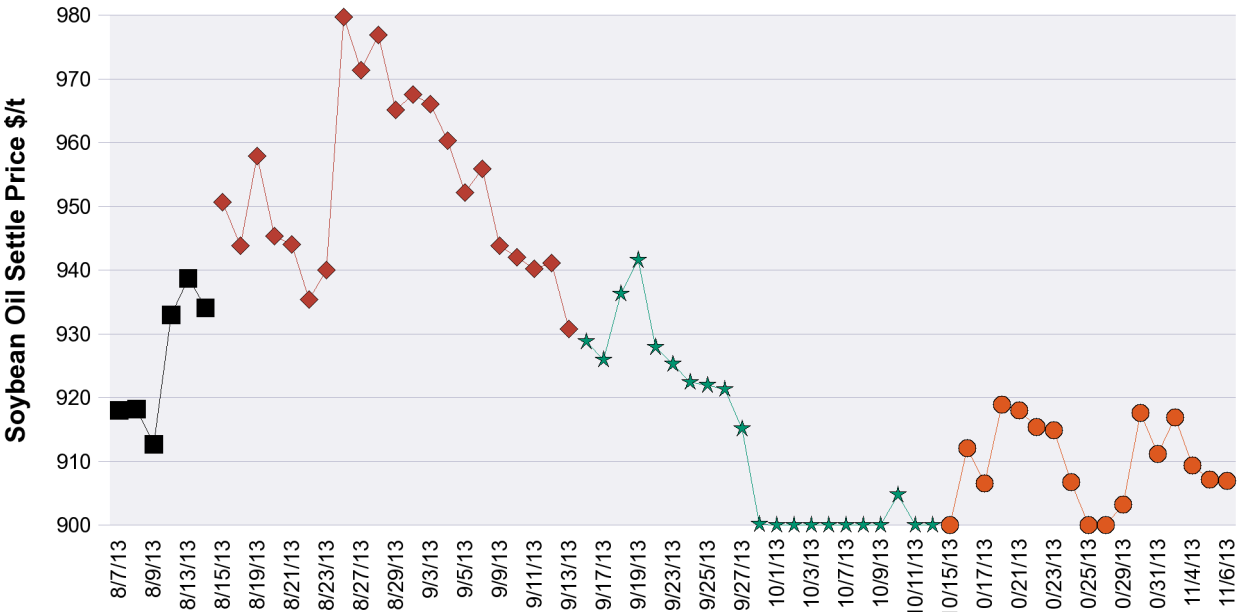


* Clear Date is in the format of MM/DD/YY

SOYBEAN OIL FUTURES VOI as of 11/6/13



Contract Month	Volume (Contracts)	Open Interest	OI Net Diff	Settle Price \$/t	Settle Price Diff \$/t
201312	35,232	115,035	-4,866	906.98	-0.22
201401	20,194	91,591	-474	913.60	-0.22
201403	6,494	47,297	122	921.75	-0.22
201405	5,025	26,928	567	929.25	0.00
201407	3,165	22,535	59	935.86	0.00
201408	348	3,101	83	937.63	-0.22
201409	426	3,706	145	937.41	-0.44
201410	118	2,385	-5	935.64	0.00
201412	881	9,442	52	938.07	-0.22
201501	4	985	0	942.92	0.00
201503	12	533	-5	948.21	0.00
201505	5	451	-5	952.40	0.00
201507	5	211	-5	951.29	-1.32
201508	0	65	0	952.18	-0.88
201509	0	63	0	953.50	-0.66
201510	0	17	0	945.78	-0.22
201512	0	34	0	946.00	0.00



* Clear Date is in the format of MM/DD/YY